

PHILIPPINE BIDDING DOCUMENTS

Procurement of INFRASTRUCTURE PROJECTS

Government of the Republic of the Philippines

**REBIDDING OF PROVISION OF LABOR,
MATERIALS, EQUIPMENT RENTAL AND
OTHER INCIDENTALS NEEDED FOR THE
CONSTRUCTION OF FEED MILL PROCESSING
FACILITY IN BRGY. #40 BUYON, BACARRA,
ILOCOS NORTE**

IB No.: DA-RFO 1-2024-INFRA-035-R

**Sixth Edition
July 2020**

TABLE OF CONTENTS

Glossary of Terms, Abbreviations, and Acronyms.....	4
Section I. Invitation to Bid	7
Section II. Instructions to Bidders.....	8
1. Scope of Bid.....	14
2. Funding Information	14
3. Bidding Requirements.....	14
4. Corrupt, Fraudulent, Collusive, Coercive, and Obstructive Practices	14
5. Eligible Bidders.....	15
6. Origin of Associated Goods	15
7. Subcontracts	15
8. Pre-Bid Conference.....	15
9. Clarification and Amendment of Bidding Documents.....	15
10. Documents Comprising the Bid: Eligibility and Technical Components.....	16
11. Documents Comprising the Bid: Financial Component	16
12. Alternative Bids	17
13. Bid Prices	17
14. Bid and Payment Currencies.....	17
15. Bid Security.....	17
16. Sealing and Marking of Bids.....	17
17. Deadline for Submission of Bids	18
18. Opening and Preliminary Examination of Bids	18
19. Detailed Evaluation and Comparison of Bids.....	18
20. Post Qualification.....	18
21. Signing of the Contract	19
Section III. Bid Data Sheet.....	20
Section IV. General Conditions of Contract	22
1. Scope of Contract.....	23
2. Sectional Completion of Works	23
3. Possession of Site.....	23
4. The Contractor’s Obligations.....	23
5. Performance Security	24
6. Site Investigation Reports	24

7.	Warranty.....	24
8.	Liability of the Contractor.....	24
9.	Termination for Other Causes.....	24
10.	Dayworks	25
11.	Program of Work.....	25
12.	Instructions, Inspections and Audits	25
13.	Advance Payment.....	25
14.	Progress Payments	25
15.	Operating and Maintenance Manuals.....	26
	Section V. Special Conditions of Contract.....	27
	Section VI. Specifications	29
	Section VII. Drawings.....	30
	Section VIII. Bill of Quantities	31
	Section IX. Checklist of Technical and Financial Documents.....	32

Glossary of Terms, Abbreviations, and Acronyms

ABC – Approved Budget for the Contract.

ARCC – Allowable Range of Contract Cost.

BAC – Bids and Awards Committee.

Bid – A signed offer or proposal to undertake a contract submitted by a bidder in response to and in consonance with the requirements of the bidding documents. Also referred to as *Proposal* and *Tender*. (2016 revised IRR, Section 5[c])

Bidder – Refers to a contractor, manufacturer, supplier, distributor and/or consultant who submits a bid in response to the requirements of the Bidding Documents. (2016 revised IRR, Section 5[d])

Bidding Documents – The documents issued by the Procuring Entity as the bases for bids, furnishing all information necessary for a prospective bidder to prepare a bid for the Goods, Infrastructure Projects, and/or Consulting Services required by the Procuring Entity. (2016 revised IRR, Section 5[e])

BIR – Bureau of Internal Revenue.

BSP – Bangko Sentral ng Pilipinas.

CDA – Cooperative Development Authority.

Consulting Services – Refer to services for Infrastructure Projects and other types of projects or activities of the GOP requiring adequate external technical and professional expertise that are beyond the capability and/or capacity of the GOP to undertake such as, but not limited to: (i) advisory and review services; (ii) pre-investment or feasibility studies; (iii) design; (iv) construction supervision; (v) management and related services; and (vi) other technical services or special studies. (2016 revised IRR, Section 5[i])

Contract – Refers to the agreement entered into between the Procuring Entity and the Supplier or Manufacturer or Distributor or Service Provider for procurement of Goods and Services; Contractor for Procurement of Infrastructure Projects; or Consultant or Consulting Firm for Procurement of Consulting Services; as the case may be, as recorded in the Contract Form signed by the parties, including all attachments and appendices thereto and all documents incorporated by reference therein.

Contractor – is a natural or juridical entity whose proposal was accepted by the Procuring Entity and to whom the Contract to execute the Work was awarded. Contractor as used in these Bidding Documents may likewise refer to a supplier, distributor, manufacturer, or consultant.

CPI – Consumer Price Index.

DOLE – Department of Labor and Employment.

DTI – Department of Trade and Industry.

Foreign-funded Procurement or Foreign-Assisted Project –Refers to procurement whose funding source is from a foreign government, foreign or international financing institution as specified in the Treaty or International or Executive Agreement. (2016 revised IRR, Section 5[b]).

GFI – Government Financial Institution.

GOCC –Government-owned and/or –controlled corporation.

Goods – Refer to all items, supplies, materials and general support services, except Consulting Services and Infrastructure Projects, which may be needed in the transaction of public businesses or in the pursuit of any government undertaking, project or activity, whether in the nature of equipment, furniture, stationery, materials for construction, or personal property of any kind, including non-personal or contractual services such as the repair and maintenance of equipment and furniture, as well as trucking, hauling, janitorial, security, and related or analogous services, as well as procurement of materials and supplies provided by the Procuring Entity for such services. The term “related” or “analogous services” shall include, but is not limited to, lease or purchase of office space, media advertisements, health maintenance services, and other services essential to the operation of the Procuring Entity. (2016 revised IRR, Section 5[r])

GOP – Government of the Philippines.

Infrastructure Projects – Include the construction, improvement, rehabilitation, demolition, repair, restoration or maintenance of roads and bridges, railways, airports, seaports, communication facilities, civil works components of information technology projects, irrigation, flood control and drainage, water supply, sanitation, sewerage and solid waste management systems, shore protection, energy/power and electrification facilities, national buildings, school buildings, hospital buildings, and other related construction projects of the government. Also referred to as *civil works or works*. (2016 revised IRR, Section 5[u])

LGUs – Local Government Units.

NFCC – Net Financial Contracting Capacity.

NGA – National Government Agency.

PCAB – Philippine Contractors Accreditation Board.

PhilGEPS - Philippine Government Electronic Procurement System.

Procurement Project – refers to a specific or identified procurement covering goods, infrastructure project or consulting services. A Procurement Project shall be described, detailed, and scheduled in the Project Procurement Management Plan prepared by the agency which shall be consolidated in the procuring entity's Annual Procurement Plan. (GPPB Circular No. 06-2019 dated 17 July 2019)

PSA – Philippine Statistics Authority.

SEC – Securities and Exchange Commission.

SLCC – Single Largest Completed Contract.

UN – United Nations.

Section I. Invitation to Bid



Republic of the Philippines
DEPARTMENT OF AGRICULTURE
 Regional Field Office No. 1
 Aguila Road, Sevilla, City of San Fernando, La Union
 Telephone No. (072) 242 1045/1046



INVITATION TO BID FOR THE REBIDDING OF PROVISION OF LABOR, MATERIALS, EQUIPMENT RENTAL AND OTHER INCIDENTALS NEEDED FOR THE CONSTRUCTION OF FEED MILL PROCESSING FACILITY IN BRGY. #40 BUYON, BACARRA, ILOCOS NORTE

1. The Department of Agriculture - Regional Field Office 1 (DA-RFO 1), through the GAA FY 2024 intends to apply the sum of **Ten Million Pesos (PhP10,000,000.00)** being the Approved Budget for the Contract (ABC) to payment under the contract for the **REBIDDING OF PROVISION OF LABOR, MATERIALS, EQUIPMENT RENTAL AND OTHER INCIDENTALS NEEDED FOR THE CONSTRUCTION OF FEED MILL PROCESSING FACILITY IN BRGY. #40 BUYON, BACARRA, ILOCOS NORTE** with project identification number **DA-RFO-1-2024-INFRA-035-R**. Bids received in excess of the ABC shall be automatically rejected at bid opening.
2. The DA-RFO 1 now invites bids for the above procurement project with the following details and specifications:

DETAILS AND SPECIFICATIONS		
Project Location: Brgy. #40 Buyon, Bacarra, Ilocos Norte		
Project Description: Construction of Feed Mill Processing Facility with a dimension of 15m x 10m		
Component 1: Building		
Scope of work:		
Description	Qty	Unit
I. MOBILIZATION AND DEMOBILIZATION	1.00	l.s.
II. PERMITS AND CLEARANCE	1.00	l.s.
III. PROJECT BILLBOARD/SIGN BOARD	1.00	l.s.
IV. SAFETY AND HEALTH	1.00	l.s.
V. CONSTRUCTION OF TEMPORARY FACILITY	12.00	sq.m.
VI. CLEARING AND GRUBBING	100.00	sq.m.
VII. EARTHWORKS	99.66	cu.m.
VIII. RSB WORKS	2,429.48	kgs
IX. FORMS WORKS	420.00	bd.ft.
X. CONCRETE WORKS	30.00	cu.m.
XI. MASONRY WORKS	30.00	sq.m.
XII. IRON WORKS	7,619.13	kgs
XIII. PAINTING WORKS	100.00	sq.m.
XIV. ROOFING AND SIDING WORKS	448.44	l.m.
XV. WINDOWS AND DOORS	29.50	sq.m.
XVI. PLUMBING WORKS	1.00	lot

XVII. ELECTRICAL WORKS	15.00	outlet
XVIII. DA LOGO	1.00	lot

MINIMUM TECHNICAL PERSONNEL REQUIRED:

- 1 Project Engineer
- 1 Foreman
- 2 Skilled Workers
- 6 Unskilled Workers

MINIMUM EQUIPMENT REQUIRED:

- 1 Concrete mixer, one-bagger
- 1 Angle grinder
- 1 Cut-off machine
- 1 Bar cutter
- 1 Welding Machine
- 1 Generator Set
- 1 Electrical drill

Component 2: Machinery

All components shall be of the same brand, brand new and not rebranded/renamed.

1. Built

- a. Compact
- b. System (per component)

2. Crusher

Function: Crush the raw materials to powder
Capacity: 100kg/hr
Primemover: 4kW, electric motor, single phase

3. Mixer

Function: Can mix materials uniformly
Capacity: 100kg/batch where one batch needs 5-10mins
Primemover: 4kW electric motor, single phase

4. Screw conveyor

Function: use to lift and transfer powder or raw materials to the mixer.
Primemover: 2.2kW electric motor, single phase
Capacity: 500 kg/hr

5. Feed pellet machine

Primemover:15kW, electric motor, 3-phase
Capacity: 300 kg/hr

6. Belt Conveyor

Capacity: 200 kg/hr
Power:2.2kw, electric motor, single phase

7. Cooler and Dust Collector

Function: Use to cool the finished product
Capacity: 200kg/hr
Primemover (cooler): 0.75 kW
Primemover (dust collector): 2.2 kW

8. Bag Sewing machine

9. With 2 tons silo

Other Requirements for the Supplier of the Goods/Machinery:

- * Brochures/Pictures, operator's manual
- * System Testing shall be conducted by AMTEC after complete installation

- * Valid Permit to Operate issued by BAFE (all machinery components must be stated as product lines) and Certificate of NAMDAC Accreditation issued by PCAF
- * Certificate of company-owned/affiliated service center within the Region and Service Center must have a Permit to Operate issued by BAFE
- * Notarized Affidavit of Undertaking for After Sales Service that supplier must render within 72 hours upon receipt of notice from the recipients/ Procuring Entity
- * Certificate of availability of spare parts of the brand/model being offered within the Region to be issued by the distributor/manufacturer/affiliated service center
- * Notarized certificate of stock allocation to be submitted during the bid opening issued by the distributor/dealer/importer specifying the name of project to DA RFO 1
- * Certificate to conduct on-site technical briefing for operators on operation, maintenance, and/or repair of the supplied goods by the supplier

With the following compatible accessories:

1. All components should be provided with compatible electric motor

- Connecting wires and cables shall conform to Electrical Code of the Philippines
- Moisture and dust proof
- With thermal protection device

2. Control panel

- Compatible to the electrical requirements of the feed milling system
- Must contain mimic flow of operation
- With basic safety cut-off features including emergency shutdown button
- With on-off push button switch and individual circuit breaker for each motor
- Dust proof

3. One (1) unit weighing scale

- Mechanical type
- Capacity: 1 ton (minimum)
- Readability: 0.5 kg

4. With safety and ease of operation features

- Path walks
- Markings/Direction/Borders
- Provision of harness
- Moving and rotating components of the feed mill must be covered
- Two (2) units fire extinguisher for the control room and feed milling area
- * Dry chemical, stored pressure type, capacity: 6.80kg, minimum
- Basic safety kits

5. With additional 2 dies, shieve and 1 spare hammermill teeth

6. Equipped with electrical requirements

7. Compatible panel board with circuit breakers

- The electrical wire, wire accessories, and piping/conduit to connect the transformer unit to the main distribution panel board and to the control panel of the Feed Milling System shall be provided by the bidder

- The electrical wires, panel board, circuit breakers and piping/conduit must be brand new

8. Appropriate heavy-duty tools: made of tempered steel and chrome vanadium

- With Heavy duty toolbox and roll up tools holder

9. With Appropriate Mounting frame

- All component of the Feed Mill shall be installed with mounting frame and fitted with brackets

10. All major components and parts of the feed should be painted powder coated. For mounting frames, path walks and catwalks should be painted finish, with rust-proofing primer and final paint color

11. With appropriate silent type generator set

12. With converter (from single phase power to 3-phase power)

Completion of the Works is **one hundred twenty (120) calendar days for Infrastructure component and forty (40) calendar days for the machinery component upon the completion of Infra component.** Bidders should have completed a contract similar to the Project. The description of an eligible bidder is contained in the Bidding Documents, particularly, in Section II. (Instructions to Bidders).

3. Bidding will be conducted through open competitive bidding procedures using a non-discretionary “pass/fail” criterion as specified in the Implementing Rules and Regulations (IRR) of Republic Act (RA) 9184.

Bidding is restricted to Filipino citizens/sole proprietorships, partnerships, or organizations with at least seventy-five percent (75%) interest or outstanding capital stock belonging to citizens of the Philippines.

4. Prospective bidders may obtain further information from and inspect the Bidding Documents at the address given below during **office hours at 8:00 AM to 5:00 PM, Monday to Friday.**

**Department of Agriculture - Regional Field Office 1
Aguila Rd., Sevilla, City of San Fernando, La Union**

5. A complete set of Bidding Documents may be acquired by interested Bidders from **December 2-23, 2024** from the address given and websites below and upon payment of the applicable fee for the Bidding Documents, pursuant to the latest Guidelines issued by the GPPB, in the amount of **PhP10,000.00**. The Procuring Entity shall allow the bidder to present its proof of payment for the fees in person, by facsimile, or through electronic means.
6. The **DA-RFO 1** will hold a Pre-Bid Conference on **09 December 2024, 3:00 PM** at DA-RFO 1, 5th Floor Conference Room, Aguila Road, Sevilla, City of San Fernando, La Union, which shall be open to prospective bidders.
7. Bids must be duly received by the BAC Secretariat through manual submission at the office address indicated above on or before **23 December 2024, 3:00 PM. Late bids shall not be accepted.**
8. All bids must be accompanied by a bid security in any of the acceptable forms and in the amount stated in **ITB** Clause 14.
9. **Bid opening** shall be on **23 December 2024, 3:00 PM** at DA-RFO 1, 5th Floor Conference Room, Aguila Road, Sevilla, City of San Fernando, La Union. Bids will be opened in the presence of the bidders or their authorized representatives.

10. ADDITIONAL INSTRUCTIONS TO BIDDERS:

- a. The bidders or their duly authorized representatives may attend the bid opening;
- b. In case a representative will be attending the Bid Opening, a Special Power of Attorney (SPA), Secretary’s Certificate, Board Resolution or any other forms of authorization (notarized), as the case may be, together with the Company-issued Identification Card or any valid ID must be presented upon submission of the bid proposal at the BAC Secretariat. The name/title of the project must be indicated in the authorization or SPA;
- c. Each Bidder shall submit one copy of the first and second components of its Bid. Bidders shall submit their bids with proper index tabbing using the forms specified in the Bidding Documents in two (2) separate sealed bid envelopes, and which shall be submitted simultaneously;

The first component which is the Technical Eligibility requirements must be soft-bound, marked with the **name of the contract** and its **IB No., name and address of the bidder**, and enclosed in an envelope, sealed with signature and marked with the **name of the contract, name and address of the bidder**, addressed to the **BIDS AND AWARDS COMMITTEE (BAC) DA RFO-1 CITY OF SAN FERNANDO, LA UNION**, the **specific Identification No.** and the warning **“DO NOT OPEN BEFORE...”** the date and time for the bid opening.

The second component being the Financial requirements may be soft-bound/fastened in a folder, marked with the **name of the contract** and its **IB No., name and address of the bidder**, and enclosed in an envelope, sealed with signature and marked with the **name of the contract, name and address of the bidder**, addressed to the **BIDS AND AWARDS COMMITTEE (BAC) DA RFO-1 CITY OF SAN FERNANDO, LA UNION**, the **specific Identification No.** and the warning **“DO NOT OPEN BEFORE...”** the date and time for the bid opening.

The Technical and Financial Requirement each in separate envelopes, shall be enclosed in a mother envelope with the same sealing and markings.

Non-compliance with index tabbings shall not be a ground for outright disqualification or declaration of ineligibility. The improper index tabbings must be duly acknowledged by the bidder/representative and be subject to the bid evaluation and post-qualification of the Technical Working Group (TWG) as to their substance.

- d. All **documents** in the **Financial Requirements envelope** must be **duly signed and/or initialed**, as needed, by the bidder/authorized representative on **EACH AND EVERY PAGE** thereof.
 - e. The Technical Specifications of the Project (as part of Tab f - Project Requirements) must be duly **SIGNED/COUNTERSIGNED AND SEALED** by a Licensed Agricultural and Biosystems Engineer in accordance with Republic Act 8559 or Republic Act 10915.
11. The **DA-RFO 1** reserves the right to reject any and all bids, declare a failure of bidding, or not award the contract at any time prior to contract award in accordance with Sections 35.6 and Section 41 of the 2016 Revised IRR of RA No. 9184, without thereby incurring any liability to the affected bidder or bidders.
 12. For further information, please refer to:

DENNIS I. TACTAC, ABE

Chairperson, Bids and Awards Committee

Department of Agriculture - Regional Field Office 1

Aguila Road, Sevilla, City of San Fernando, La Union

Tel. No.:(072) 242/1045-46, Ext. 07

E-mail add: bacsec@ilocos.da.gov.ph

13. For downloading of Bidding Documents, you may visit the following websites:
DA-RFO1 Website: <https://ilocos.da.gov.ph/>
PhilGEPS Website: <https://www.philgeps.gov.ph/>

November 29, 2024

Approved by:

(Sgd.) GILBERT D. RABARA, DVM
Vice-Chairperson, Bids and Awards Committee

Invitation to Bid Identification No. DA-RFO 1-2024-INFRA-035-R

Section II. Instructions to Bidders

1. Scope of Bid

The Procuring Entity, **Department of Agriculture - Regional Field Office 1 (DA-RFO 1)** invites Bids for the **REBIDDING OF PROVISION OF LABOR, MATERIALS, EQUIPMENT RENTAL AND OTHER INCIDENTALS NEEDED FOR THE CONSTRUCTION OF FEED MILL PROCESSING FACILITY IN BRGY. #40 BUYON, BACARRA, ILOCOS NORTE** with Project Identification Number **DA-RFO 1-2024-INFRA-035-R**.

The Procurement Project (referred to herein as “Project”) is for the construction of Works, as described in Section VI (Specifications).

2. Funding Information

2.1. The GOP through the source of funding as indicated below for **GAA FY 2024** in the amount of **Ten Million Pesos (PhP10,000,000.00)**.

3. Bidding Requirements

The Bidding for the Project shall be governed by all the provisions of RA No. 9184 and its 2016 revised IRR, including its Generic Procurement Manual and associated policies, rules and regulations as the primary source thereof, while the herein clauses shall serve as the secondary source thereof.

Any amendments made to the IRR and other GPPB issuances shall be applicable only to the ongoing posting, advertisement, or invitation to bid by the BAC through the issuance of a supplemental or bid bulletin.

The Bidder, by the act of submitting its Bid, shall be deemed to have inspected the site, determined the general characteristics of the contracted Works and the conditions for this Project, such as the location and the nature of the work; (b) climatic conditions; (c) transportation facilities; (c) nature and condition of the terrain, geological conditions at the site communication facilities, requirements, location and availability of construction aggregates and other materials, labor, water, electric power and access roads; and (d) other factors that may affect the cost, duration and execution or implementation of the contract, project, or work and examine all instructions, forms, terms, and project requirements in the Bidding Documents.

4. Corrupt, Fraudulent, Collusive, Coercive, and Obstructive Practices

The Procuring Entity, as well as the Bidders and Contractors, shall observe the highest standard of ethics during the procurement and execution of the contract. They or through an agent shall not engage in corrupt, fraudulent, collusive, coercive, and

obstructive practices defined under Annex “I” of the 2016 revised IRR of RA No. 9184 or other integrity violations in competing for the Project.

5. Eligible Bidders

- 5.1. Only Bids of Bidders found to be legally, technically, and financially capable will be evaluated.
- 5.2. The Bidder must have an experience of having completed a Single Largest Completed Contract (SLCC) that is similar to this Project, equivalent to at least fifty percent (50%) of the ABC adjusted, if necessary, by the Bidder to current prices using the PSA’s CPI, except under conditions provided for in Section 23.4.2.4 of the 2016 revised IRR of RA No. 9184.

A contract is considered to be “similar” to the contract to be bid if it has the major categories of work stated in the **BDS**.

- 5.3. For Foreign-funded Procurement, the Procuring Entity and the foreign government/foreign or international financing institution may agree on another track record requirement, as specified in the Bidding Document prepared for this purpose.
- 5.4. The Bidders shall comply with the eligibility criteria under Section 23.4.2 of the 2016 IRR of RA No. 9184.

6. Origin of Associated Goods

There is no restriction on the origin of Goods other than those prohibited by a decision of the UN Security Council taken under Chapter VII of the Charter of the UN.

7. Subcontracts

- 7.1. The Bidder may subcontract portions of the Project to the extent allowed by the Procuring Entity as stated herein, but in no case more than fifty percent (50%) of the Project.

The Procuring Entity has prescribed that subcontracting is not allowed:

8. Pre-Bid Conference

The Procuring Entity will hold a pre-bid conference for this Project on the specified date and time and either at its physical address, **5th Floor Conference Room, Aguila Road, Sevilla, City of San Fernando, La Union** indicated in paragraph 6 of the **IB**.

9. Clarification and Amendment of Bidding Documents

Prospective bidders may request for clarification on and/or interpretation of any part of the Bidding Documents. Such requests must be in writing and received by the Procuring Entity, either at its given address or through electronic mail indicated in the

IB, at least ten (10) calendar days before the deadline set for the submission and receipt of Bids.

10. Documents Comprising the Bid: Eligibility and Technical Components

- 10.1. The first envelope shall contain the eligibility and technical documents of the Bid as specified in **Section IX. Checklist of Technical and Financial Documents**.
- 10.2. If the eligibility requirements or statements, the bids, and all other documents for submission to the BAC are in foreign language other than English, it must be accompanied by a translation in English, which shall be authenticated by the appropriate Philippine foreign service establishment, post, or the equivalent office having jurisdiction over the foreign bidder's affairs in the Philippines. For Contracting Parties to the Apostille Convention, only the translated documents shall be authenticated through an apostille pursuant to GPPB Resolution No. 13-2019 dated 23 May 2019. The English translation shall govern, for purposes of interpretation of the bid.
- 10.3. A valid PCAB License is required, and in case of joint ventures, a valid special PCAB License, and registration for the type and cost of the contract for this Project. Any additional type of Contractor license or permit shall be indicated in the **BDS**.
- 10.4. A List of Contractor's key personnel (e.g., Project Manager, Project Engineers, Materials Engineers, and Foremen) assigned to the contract to be bid, with their complete qualification and experience data shall be provided. These key personnel must meet the required minimum years of experience set in the **BDS**.
- 10.5. A List of Contractor's major equipment units, which are owned, leased, and/or under purchase agreements, supported by proof of ownership, certification of availability of equipment from the equipment lessor/vendor for the duration of the project, as the case may be, must meet the minimum requirements for the contract set in the **BDS**.

11. Documents Comprising the Bid: Financial Component

- 11.1. The second bid envelope shall contain the financial documents for the Bid as specified in **Section IX. Checklist of Technical and Financial Documents**.
- 11.2. Any bid exceeding the ABC indicated in paragraph 1 of the **IB** shall not be accepted.
- 11.3. For Foreign-funded procurement, a ceiling may be applied to bid prices provided the conditions are met under Section 31.2 of the 2016 revised IRR of RA No. 9184.

12. Alternative Bids

Bidders shall submit offers that comply with the requirements of the Bidding Documents, including the basic technical design as indicated in the drawings and specifications. Unless there is a value engineering clause in the **BDS**, alternative Bids shall not be accepted.

13. Bid Prices

All bid prices for the given scope of work in the Project as awarded shall be considered as fixed prices, and therefore not subject to price escalation during contract implementation, except under extraordinary circumstances as determined by the NEDA and approved by the GPPB pursuant to the revised Guidelines for Contract Price Escalation guidelines.

14. Bid and Payment Currencies

14.1. Bid prices may be quoted in the local currency or tradeable currency accepted by the BSP at the discretion of the Bidder. However, for purposes of bid evaluation, Bids denominated in foreign currencies shall be converted to Philippine currency based on the exchange rate as published in the BSP reference rate bulletin on the day of the bid opening.

14.2. *Payment of the contract price shall be made in:*

- a. Philippine Pesos.

15. Bid Security

15.1. The Bidder shall submit a Bid Securing Declaration or any form of Bid Security in the amount indicated in the **BDS**, which shall be not less than the percentage of the ABC in accordance with the schedule in the **BDS**.

15.2. The Bid and bid security shall be valid until **April 22, 2025**. Any bid not accompanied by an acceptable bid security shall be rejected by the Procuring Entity as non-responsive.

16. Sealing and Marking of Bids

Each Bidder shall submit one copy of the first and second components of its Bid.

The Procuring Entity may request additional hard copies and/or electronic copies of the Bid. However, failure of the Bidders to comply with the said request shall not be a ground for disqualification.

If the Procuring Entity allows the submission of bids through online submission to the given website or any other electronic means, the Bidder shall submit an electronic

copy of its Bid, which must be digitally signed. An electronic copy that cannot be opened or is corrupted shall be considered non-responsive and, thus, automatically disqualified.

17. Deadline for Submission of Bids

The Bidders shall submit on the specified date and time and either at its physical address or through online submission as indicated in paragraph 7 of the **IB**.

18. Opening and Preliminary Examination of Bids

18.1. The BAC shall open the Bids in public at the time, on the date, and at the place specified in paragraph 9 of the **IB**. The Bidders' representatives who are present shall sign a register evidencing their attendance. In case videoconferencing, webcasting or other similar technologies will be used, attendance of participants shall likewise be recorded by the BAC Secretariat.

In case the Bids cannot be opened as scheduled due to justifiable reasons, the rescheduling requirements under Section 29 of the 2016 revised IRR of RA No. 9184 shall prevail.

18.2. The preliminary examination of Bids shall be governed by Section 30 of the 2016 revised IRR of RA No. 9184.

19. Detailed Evaluation and Comparison of Bids

19.1. The Procuring Entity's BAC shall immediately conduct a detailed evaluation of all Bids rated "*passed*" using non-discretionary pass/fail criteria. The BAC shall consider the conditions in the evaluation of Bids under Section 32.2 of 2016 revised IRR of RA No. 9184.

19.2. If the Project allows partial bids, all Bids and combinations of Bids as indicated in the **BDS** shall be received by the same deadline and opened and evaluated simultaneously so as to determine the Bid or combination of Bids offering the lowest calculated cost to the Procuring Entity. Bid Security as required by **ITB** Clause 15 shall be submitted for each contract (lot) separately.

19.3. In all cases, the NFCC computation pursuant to Section 23.4.2.6 of the 2016 revised IRR of RA No. 9184 must be sufficient for the total of the ABCs for all the lots participated in by the prospective Bidder.

20. Post Qualification

Within a non-extendible period of five (5) calendar days from receipt by the Bidder of the notice from the BAC that it submitted the Lowest Calculated Bid, the Bidder shall submit its latest income and business tax returns filed and paid through the BIR Electronic Filing and Payment System (eFPS), and other appropriate licenses and permits required by law and stated in the **BDS**.

21. Signing of the Contract

The documents required in Section 37.2 of the 2016 revised IRR of RA No. 9184 shall form part of the Contract. Additional Contract documents are indicated in the **BDS**.

Section III. Bid Data Sheet

Bid Data Sheet

ITB Clause																									
5.2	For this purpose, contracts similar to the Project refer to contracts which have the same major categories of work, which shall be: CONSTRUCTION OF PROCESSING FACILITY																								
7.1	N/A																								
10.3	N/A																								
10.4	The key personnel must meet the required minimum years of experience set below: <table border="1" style="margin-left: auto; margin-right: auto;"> <thead> <tr> <th style="text-align: center;">Key Personnel</th> <th style="text-align: center;">General Experience</th> <th style="text-align: center;">Relevant Experience</th> </tr> </thead> <tbody> <tr> <td style="text-align: center;">Project Engineer</td> <td style="text-align: center;">3 years</td> <td style="text-align: center;">Construction Supervision</td> </tr> <tr> <td style="text-align: center;">Foreman</td> <td style="text-align: center;">2 years</td> <td style="text-align: center;">Masonry/Carpentry</td> </tr> </tbody> </table>	Key Personnel	General Experience	Relevant Experience	Project Engineer	3 years	Construction Supervision	Foreman	2 years	Masonry/Carpentry															
Key Personnel	General Experience	Relevant Experience																							
Project Engineer	3 years	Construction Supervision																							
Foreman	2 years	Masonry/Carpentry																							
10.5	The minimum major equipment requirements are the following: <table border="1" style="margin-left: auto; margin-right: auto;"> <thead> <tr> <th style="text-align: center;">Equipment</th> <th style="text-align: center;">Capacity</th> <th style="text-align: center;">No. of Units</th> </tr> </thead> <tbody> <tr> <td style="text-align: center;">Concrete mixer,</td> <td style="text-align: center;">one-bagger</td> <td style="text-align: center;">1</td> </tr> <tr> <td style="text-align: center;">Angle grinder</td> <td></td> <td style="text-align: center;">1</td> </tr> <tr> <td style="text-align: center;">Cut-off machine</td> <td></td> <td style="text-align: center;">1</td> </tr> <tr> <td style="text-align: center;">Bar cutter</td> <td></td> <td style="text-align: center;">1</td> </tr> <tr> <td style="text-align: center;">Welding Machine</td> <td></td> <td style="text-align: center;">1</td> </tr> <tr> <td style="text-align: center;">Generator Set</td> <td></td> <td style="text-align: center;">1</td> </tr> <tr> <td style="text-align: center;">Electrical drill</td> <td></td> <td style="text-align: center;">1</td> </tr> </tbody> </table>	Equipment	Capacity	No. of Units	Concrete mixer,	one-bagger	1	Angle grinder		1	Cut-off machine		1	Bar cutter		1	Welding Machine		1	Generator Set		1	Electrical drill		1
Equipment	Capacity	No. of Units																							
Concrete mixer,	one-bagger	1																							
Angle grinder		1																							
Cut-off machine		1																							
Bar cutter		1																							
Welding Machine		1																							
Generator Set		1																							
Electrical drill		1																							
12	N/A																								
15.1	The bid security shall be in the form of a Bid Securing Declaration or any of the following forms and amounts: a. The amount of not less than Php200,000.00 bid security is in cash, cashier's/manager's check, bank draft/guarantee or irrevocable letter of credit; b. The amount of not less than Php500,000.00 bid security is in Surety Bond.																								
19.2	Partial bidis not allowed.																								
20	Latest income and business tax returns filed and paid through the BIR Electronic Filing and Payment System (eFPS) and other appropriate licenses and permits required by law.																								
21	Additional contract documents relevant to the Project that may be required by existing laws and/or the Procuring Entity, such as construction schedule and S-curve, manpower schedule, construction methods, equipment utilization schedule, construction safety and health program approved by the DOLE, and other acceptable tools of project scheduling.																								

Section IV. General Conditions of Contract

1. Scope of Contract

This Contract shall include all such items, although not specifically mentioned, that can be reasonably inferred as being required for its completion as if such items were expressly mentioned herein. All the provisions of RA No. 9184 and its 2016 revised IRR, including the Generic Procurement Manual, and associated issuances, constitute the primary source for the terms and conditions of the Contract, and thus, applicable in contract implementation. Herein clauses shall serve as the secondary source for the terms and conditions of the Contract.

This is without prejudice to Sections 74.1 and 74.2 of the 2016 revised IRR of RA No. 9184 allowing the GPPB to amend the IRR, which shall be applied to all procurement activities, the advertisement, posting, or invitation of which were issued after the effectivity of the said amendment.

2. Sectional Completion of Works

If sectional completion is specified in the **Special Conditions of Contract (SCC)**, references in the Conditions of Contract to the Works, the Completion Date, and the Intended Completion Date shall apply to any Section of the Works (other than references to the Completion Date and Intended Completion Date for the whole of the Works).

3. Possession of Site

3.1 The Procuring Entity shall give possession of all or parts of the Site to the Contractor based on the schedule of delivery indicated in the **SCC**, which corresponds to the execution of the Works. If the Contractor suffers delay or incurs cost from failure on the part of the Procuring Entity to give possession in accordance with the terms of this clause, the Procuring Entity's Representative shall give the Contractor a Contract Time Extension and certify such sum as fair to cover the cost incurred, which sum shall be paid by Procuring Entity.

3.2 If possession of a portion is not given by the above date, the Procuring Entity will be deemed to have delayed the start of the relevant activities. The resulting adjustments in contract time to address such delay may be addressed through contract extension provided under Annex "E" of the 2016 revised IRR of RA No. 9184.

4. The Contractor's Obligations

The Contractor shall employ the key personnel named in the Schedule of Key Personnel indicating their designation, in accordance with **ITB** Clause 10.3 and specified in the **BDS**, to carry out the supervision of the Works.

The Procuring Entity will approve any proposed replacement of key personnel only if their relevant qualifications and abilities are equal to or better than those of the personnel listed in the Schedule.

5. Performance Security

- 5.1. Within ten (10) calendar days from receipt of the Notice of Award from the Procuring Entity but in no case later than the signing of the contract by both parties, the successful Bidder shall furnish the performance security in any of the forms prescribed in Section 39 of the 2016 revised IRR.
- 5.2. The Contractor, by entering into the Contract with the Procuring Entity, acknowledges the right of the Procuring Entity to institute action pursuant to RA No. 3688 against any subcontractor be they an individual, firm, partnership, corporation, or association supplying the Contractor with labor, materials and/or equipment for the performance of this Contract.

6. Site Investigation Reports

The Contractor, in preparing the Bid, shall rely on any Site Investigation Reports referred to in the **SCC** supplemented by any information obtained by the Contractor.

7. Warranty

- 7.1. In case the Contractor fails to undertake the repair works under Section 62.2.2 of the 2016 revised IRR, the Procuring Entity shall forfeit its performance security, subject its property(ies) to attachment or garnishment proceedings, and perpetually disqualify it from participating in any public bidding. All payables of the GOP in his favor shall be offset to recover the costs.
- 7.2. The warranty against Structural Defects/Failures, except that occasioned-on force majeure, shall cover the period from the date of issuance of the Certificate of Final Acceptance by the Procuring Entity. Specific duration of the warranty is found in the **SCC**.

8. Liability of the Contractor

Subject to additional provisions, if any, set forth in the **SCC**, the Contractor's liability under this Contract shall be as provided by the laws of the Republic of the Philippines.

If the Contractor is a joint venture, all partners to the joint venture shall be jointly and severally liable to the Procuring Entity.

9. Termination for Other Causes

Contract termination shall be initiated in case it is determined *prima facie* by the Procuring Entity that the Contractor has engaged, before, or during the implementation of the contract, in unlawful deeds and behaviors relative to contract acquisition and implementation, such as, but not limited to corrupt, fraudulent, collusive, coercive, and obstructive practices as stated in **ITB** Clause 4.

10. Dayworks

Subject to the guidelines on Variation Order in Annex “E” of the 2016 revised IRR of RA No. 9184, and if applicable as indicated in the **SCC**, the Dayworks rates in the Contractor’s Bid shall be used for small additional amounts of work only when the Procuring Entity’s Representative has given written instructions in advance for additional work to be paid for in that way.

11. Program of Work

11.1. The Contractor shall submit to the Procuring Entity’s Representative for approval the said Program of Work showing the general methods, arrangements, order, and timing for all the activities in the Works. The submissions of the Program of Work are indicated in the **SCC**.

11.2. The Contractor shall submit to the Procuring Entity’s Representative for approval an updated Program of Work at intervals no longer than the period stated in the **SCC**. If the Contractor does not submit an updated Program of Work within this period, the Procuring Entity’s Representative may withhold the amount stated in the **SCC** from the next payment certificate and continue to withhold this amount until the next payment after the date on which the overdue Program of Work has been submitted.

12. Instructions, Inspections and Audits

The Contractor shall permit the GOP or the Procuring Entity to inspect the Contractor’s accounts and records relating to the performance of the Contractor and to have them audited by auditors of the GOP or the Procuring Entity, as may be required.

13. Advance Payment

The Procuring Entity shall, upon a written request of the Contractor which shall be submitted as a Contract document, make an advance payment to the Contractor in an amount not exceeding fifteen percent (15%) of the total contract price, to be made in lump sum, or at the most two installments according to a schedule specified in the **SCC**, subject to the requirements in Annex “E” of the 2016 revised IRR of RA No. 9184.

14. Progress Payments

The Contractor may submit a request for payment for Work accomplished. Such requests for payment shall be verified and certified by the Procuring Entity’s Representative/Project Engineer. Except as otherwise stipulated in the **SCC**, materials and equipment delivered on the site but not completely put in place shall not be included for payment.

15. Operating and Maintenance Manuals

- 15.1. If required, the Contractor will provide “as built” Drawings and/or operating and maintenance manuals as specified in the **SCC**.
- 15.2. If the Contractor does not provide the Drawings and/or manuals by the dates stated above, or they do not receive the Procuring Entity’s Representative’s approval, the Procuring Entity’s Representative may withhold the amount stated in the **SCC** from payments due to the Contractor.

Section V. Special Conditions of Contract

Special Conditions of Contract

GCC Clause	
2	N/A
4.1	Schedule of construction in full shall start within 7 calendar days from receipt of the Notice to Proceed
6	N/A
7.2	[In case of permanent structures, such as buildings of types 4 and 5 as classified under the National Building Code of the Philippines and other structures made of steel, iron, or concrete which comply with relevant structural codes (e.g., DPWH Standard Specifications), such as, but not limited to, steel/concrete bridges, flyovers, aircraft movement areas, ports, dams, tunnels, filtration and treatment plants, sewerage systems, power plants, transmission and communication towers, railway system, and other similar permanent structures:] Fifteen (15) years
10	a. Dayworks are applicable at the rate shown in the Contractor's original Bid.
11.1	The Contractor shall submit the Program of Work (PERT-CPM, Construction Schedule, S-Curve and Construction Methods) to the Procuring Entity's Representative within 10 calendar days of delivery of the Notice of Award.
11.2	The amount to be withheld for late submission of an updated Program of Work is 10% of the 15% Advance Payment.
13	The amount of the advance payment is 15% of the Contract Price.
14	Materials and equipment delivered on the site but not completely put in place (Actual Accomplishment) shall not be included for payment.
15.1	The "as built" Drawings and/or operating and maintenance manuals shall be required prior to the final payment.
15.2	The amount to be withheld for failing to produce "as built" drawings and/or operating and maintenance manuals by the date required is 10% of the final billing.

Section VI. Specifications

Section VII. Drawings

[Insert here a list of Drawings. The actual Drawings, including site plans, should be attached to this section, or annexed in a separate folder.]

Section VIII. Bill of Quantities

Section IX. Checklist of Technical and Financial Documents

Checklist of Technical and Financial Documents

I. TECHNICAL COMPONENT ENVELOPE

Class “A” Documents

Legal Documents

- (a) Valid PhilGEPS Registration Certificate (Platinum Membership) (all pages) in accordance with Section 8.5.2 of the IRR;

Technical Documents

- (b) Statement of the prospective bidder of all its ongoing government and private contracts, including contracts awarded but not yet started, if any, whether similar or not similar in nature and complexity to the contract to be bid; **and**
- (c) Statement of the bidder’s Single Largest Completed Contract (SLCC) similar to the contract to be bid, except under conditions provided under the rules; **and**
- (d) Special PCAB License in case of Joint Ventures; **and** registration for the type and cost of the contract to be bid; **and**
- (e) Original copy of Bid Security. If in the form of a Surety Bond, submit also a certification issued by the Insurance Commission; **or**
Original copy of Notarized Bid Securing Declaration; **and**
- (f) Project Requirements, which shall include the following:
 - a. Organizational chart for the contract to be bid;
 - b. List of contractor’s key personnel (*e.g.*, Project Manager, Project Engineers, Materials Engineers, and Foremen), to be assigned to the contract to be bid, with their complete qualification and experience data;
 - c. List of contractor’s major equipment units, which are owned, leased, and/or under purchase agreements, supported by proof of ownership or certification of availability of equipment from the equipment lessor/vendor for the duration of the project, as the case may be; **and**
- (g) Original duly signed Omnibus Sworn Statement (OSS); **and** if applicable, Original Notarized Secretary’s Certificate in case of a corporation, partnership, or cooperative; or Original Special Power of Attorney of all members of the joint venture giving full power and authority to its officer to sign the OSS and do acts to represent the Bidder.

Financial Documents

- (h) The prospective bidder’s computation of Net Financial Contracting Capacity (NFCC).

Class “B” Documents

- (i) If applicable, duly signed joint venture agreement (JVA) in accordance with RA No. 4566 and its IRR in case the joint venture is already in existence; **or**
duly notarized statements from all the potential joint venture partners stating

that they will enter into and abide by the provisions of the JVA in the instance that the bid is successful.

II. FINANCIAL COMPONENT ENVELOPE

- (j) Original of duly signed and accomplished Financial Bid Form; **and**

Other documentary requirements under RA No. 9184

- (k) Original of duly signed Bid Prices in the Bill of Quantities; **and**
- (l) Duly accomplished Detailed Estimates Form, including a summary sheet indicating the unit prices of construction materials, labor rates, and equipment rentals used in coming up with the Bid; **and**
- (m) Cash Flow by Quarter.



Technical Specifications

Instructions:

[Bidders must state here either "Comply" or "Not Comply" against each of the individual parameters of each Specification stating the corresponding performance parameter of the equipment/goods offered. Statements of "Comply" or "Not Comply" must be supported by evidence in a Bidders Bid and cross-referenced to that evidence. Evidence shall be in the form of manufacturer's un-amended sales literature, unconditional statements of specification and compliance issued by the manufacturer, samples, independent test data etc., as appropriate.]

The Technical Specification must be supported with the following:

- * Brochures/Pictures, operator's manual
- * Valid Permit to Operate issued by BAFE (all machinery components must be stated as product lines) and Certificate of NAMDAC Accreditation issued by PCAF
- * Certificate of company-owned/affiliated service center within the Region and Service Center must have a Permit to Operate issued by BAFE
- * Notarized Affidavit of Undertaking for After Sales Service that supplier must render within 72 hours upon receipt of notice from the recipients/ Procuring Entity
- * Certificate of availability of spare parts of the brand/model being offered within the Region to be issued by the distributor/manufacturer/affiliated service center
- * Notarized certificate of stock allocation to be submitted during the bid opening issued by the distributor/dealer/importer specifying the name of project to DA RFO I
- * Certificate to conduct on-site technical briefing for operators on operation, maintenance, and/or repair of the supplied goods by the supplier

A statement that is not supported by evidence or is subsequently found to be contradicted by the evidence presented will render the Bid under evaluation liable for rejection. A statement either in the Bidder's statement of compliance or the supporting evidence that is found to be false either during Bid evaluation, post-qualification or the execution of the Contract may be regarded as fraudulent and render the Bidder or supplier liable for prosecution subject to the applicable laws and issuances.

Specification	Statement of Compliance
All components shall be of the same brand, brand new and not rebranded/renamed.	
1. Built	
a. Compact	
b. System (per component)	
2. Crusher	
Function: Crush the raw materials to powder	
Capacity: 100kg/hr	
Primemover: 4kW, electric motor, single phase	
3. Mixer	
Function: Can mix materials uniformly	
Capacity: 100kg/batch where one batch needs 5-10mins	
Primemover: 4kW electric motor, single phase	
4. Screw conveyor	
Function: use to lift and transfer powder or raw materials to the mixer.	
Primemover: 2.2kW electric motor, single phase	
Capacity: 500 kg/hr	
5. Feed pellet machine	
Primemover: 15kW, electric motor, 3-phase	
Capacity: 300 kg/hr	
6. Belt Conveyor	
Capacity: 200 kg/hr	
Power: 2.2kw, electric motor, single phase	

7. Cooler and Dust Collector	
Function: Use to cool the finished product	
Capacity: 200kg/hr	
Primemover (cooler): 0.75 kW	
Primemover (dust collector): 2.2 kW	
8. Bag Sewing machine	
9. With 2 tons silo	
Other Requirements for the Supplier of the Goods/Machinery:	
* Brochures/Pictures, operator's manual	
* System Testing shall be conducted by AMTEC after complete installation	
* Valid Permit to Operate issued by BAFE (all machinery components must be stated as product lines) and Certificate of NAMDAC Accreditation issued by PCAF	
* Certificate of company-owned/affiliated service center within the Region and Service Center must have a Permit to Operate issued by BAFE	
* Notarized Affidavit of Undertaking for After Sales Service that supplier must render within 72 hours upon receipt of notice from the recipients/ Procuring Entity	
* Certificate of availability of spare parts of the brand/model being offered within the Region to be issued by the distributor/manufacturer/affiliated service center	
* Notarized certificate of stock allocation to be submitted during the bid opening issued by the distributor/dealer/importer specifying the name of project to DA RFO 1	
* Certificate to conduct on-site technical briefing for operators on operation, maintenance, and/or repair of the supplied goods by the supplier	
With the following compatible accessories:	
1. All components should be provided with compatible electric motor	
- Connecting wires and cables shall conform to Electrical Code of the Philippines	
- Moisture and dust proof	
- With thermal protection device	
2. Control panel	
- Compatible to the electrical requirements of the feed milling system	
- Must contain mimic flow of operation	
- With basic safety cut-off features including emergency shutdown button	
- With on-off push button switch and individual circuit breaker for each motor	
- Dust proof	
3. One (1) unit weighing scale	
- Mechanical type	
- Capacity: 1 ton (minimum)	
- Readability: 0.5 kg	
4. With safety and ease of operation features	
- Path walks	
- Markings/Direction/Borders	

- Provision of harness	
- Moving and rotating components of the feed mill must be covered	
- Two (2) units fire extinguisher for the control room and feed milling area * Dry chemical, stored pressure type, capacity: 6.80kg, minimum	
- Basic safety kits	
5. With additional 2 dies, shieve and 1 spare hammermill teeth	
6. Equipped with electrical requirements	
7. Compatible panel board with circuit breakers	
- The electrical wire, wire accessories, and piping/conduit to connect the transformer unit to the main distribution panel board and to the control panel of the Feed Milling System shall be provided by the bidder	
- The electrical wires, panel board, circuit breakers and piping/conduit must be brand new	
8. Appropriate heavy duty tools: made of tempered steel and chrome vanadium	
- With Heavy duty toolbox and roll up tools holder	
9. With Appropriate Mounting frame	
- All component of the Feed Mill shall be installed with mounting frame and fitted with brackets	
11. All major components and parts of the feed should be painted powder coated. For mounting frames, path walks and catwalks should be painted finish, with rust-proofing primer and final paint color	
11. With appropriate silent type generator set	
12. With converter (from single phase power to 3-phase power)	



SCOPE OF WORK AND SPECIFICATIONS

PROJECT NAME: Construction of Feed Mill Processing Facility
LOCATION: Brgy. # 40 Buyon, Bacarra, Ilocos Norte
PROJECT DESCRIPTION: Construction of Feed Mill Processing Facility with a dimension of 15mx10m
AMOUNT: PHP 2,100,000.00

GENERAL PROVISIONS	
<p>The contractor/implementer of the project shall verify all dimensions and conditions of the site and shall notify the DA Project Engineer for any discrepancies between actual conditions and information shown in the drawing before proceeding with the work.</p> <p>The structural drawings and specifications represent the general framework of the structure. They do not indicate methods of construction, unless so stated, the contractor/implementer shall provide all necessary measures to protect the structure, the contractor/ implementer's obligation to notify the DA Project Engineer of any conditions that may endanger the stability or cause distress in the structure during phases of construction.</p> <p>This set of specifications shall govern the methods of construction and kinds of materials to be used for the proposed Project shown on the accompanying plans and detailed drawings.</p> <p>All parts of the construction shall be finished with first class workmanship to the fullest talent and meaning of plans and the specifications, and to the satisfaction of the Department of Agriculture through its Project Engineer. Any defective material or poor workmanship should be replaced or improved by the contractor without additional cost to the owner.</p> <p>All other materials specifically indicated and illustrated on plans shall be taken as part of this specification regardless whether or not written and such other materials shall be approved by the owner before they are set in place.</p>	
I.	<p>MOBILIZATION & DEMOBILIZATION 1.00 L.S.</p> <ul style="list-style-type: none"> • The Contractor shall provide all labor and equipment costs necessary to move personnel, equipment, supplies and incidentals to and from the Project Site, establish offices, buildings, and other facilities necessary for the Work, obtain bonds, required insurance and any other pre-construction expenses necessary to perform the Work. This section shall exclude the cost of construction materials.
II.	<p>PERMITS AND CLEARANCES 1.00 L.S.</p> <ul style="list-style-type: none"> • The contractor is responsible to secure and obtain information from the regulatory agencies in municipality for all and any other required permits not listed below. A copy of the required permits shall be submitted to the end user within 24 hours of obtaining such permits.

<ul style="list-style-type: none"> • Building Permit/s, including the demolition of the building, the foundation are the general contractor's responsibility. • Electrical permit and plans (if required by Building Official), is the contractor's responsibility. • Plumbing permit and plans (if required by Building Official), is the contractor's responsibility. • Health department approval and septic connections, contractor's responsibility. Contractor is required to check with the department to obtain information on the required plans and permits, if any. 	
III. PROJECT BILLBOARD / SIGN BOARD	1.00 L.S.
<ul style="list-style-type: none"> • The installation of the required standard billboard size (1200mm X 2400mm/4 ft. x 8ft.) shall be strictly followed. • No political billboard shall be allowed to be installed 100 meters before and after the projects and within the project limits. • The billboard shall be installed in front of the project site. • The bill board shall contain the Project Title, Name of Contractor, Date Started (Notice to Proceed), Contract Completion Date, Contract Cost, Construction Consultant, Implementing Office (Department of Agriculture Regional Field Office I), Name of Fund. 	
IV. SAFETY AND HEALTH	1.00 L.S.
<p>A. FISRT AID KIT</p> <ol style="list-style-type: none"> The first aid kit shall contain the following <ol style="list-style-type: none"> Plasters in variety of different sizes and shapes Small, medium and large sterile gauze dressings At least 2 sterile eye dressings Triangular bandages Crepe rolled bandages Safety pins, tweezers, scissors and sticky tape Alcohol free cleansing wipes Skin rash cream such as hydrocortisone or calendula Antiseptic cream Painkillers Cough medicine Distilled water for wound cleansing Eyewash or eyebath. The contractor shall have at least one firs aid practitioner (first aider) with certification. <p>B. SAFETY DEVICES</p> <ol style="list-style-type: none"> The contractor shall provide PPE for its workforce. The contractor shall provide safety devices like barricades, warning signs, fire blankets and high visibility caution tapes. The Contractor shall provide a full time safety practitioner (Safety Officer) to ensure the safety of its work force. The Contractor should comply with the latest Occupational Safety and Health Standards by the Department of Labor and Employment. Any work done beyond the height of 3m, the worker should wear a full body harness suspended on a solid anchor and to a life line. 	
V. TEMPORARY FACILITY	12 sq.m
<ul style="list-style-type: none"> • The contractor shall obtain temporary facility and maintain in good condition a supply of potable water for construction use. 	

<ul style="list-style-type: none"> • The contractor shall install temporary electric services with sufficient capacity to supply proper current for various types of construction tools, motors, welding machines, pumps, testing, and other work required. • Provide adequately ventilated, watertight storage facilities with floor above ground level for materials and equipment susceptible to weather damage. • Store materials in a neat and orderly manner. Place materials and equipment to permit easy access for identification, inspection and inventory. 	
VI. CLEARING AND GRUBBING	100.00 sq.m
<ul style="list-style-type: none"> • The work under this Section shall include clearing, grubbing and disposal, in a manner approved by DA-RFO I, of all vegetation, trees, stumps, roots, brush, rubbish and all objectionable or undesirable matters within the entire dam site, construction camp site borrow areas, road surfacing materials sources, stockpile areas and elsewhere as may be directed by the Project Engineer; all in accordance with Drawings and this Specifications or as directed by the Project Engineer. 	
VII. EARTHWORKS	99.66 cu.m
<ul style="list-style-type: none"> • The work under this Section shall include clearing removal, hauling and disposal of all excavated materials tamping and trimming of foundation bed required for the construction of permanent structure, pump sump, PV arrays foundation, perimeter fence foundation, control room, irrigation canals and distribution pipe trench. • The contractor shall make all necessary excavation for foundations to grade indicated on the drawings. Work that is excavated to a greater extent than required by the drawings and specifications and which is within the bearing area of walls, footings, or floor slabs shall be filled structural specifications. The structure foundation shall be staked out accurately, after which, approval by the Architect/Engineer shall be secured before any excavation work is done. The Contractor shall secure the surrounding properties from all forms of damage and destruction caused by the excavation. • No foundation shall rest on fill. All excavation shall be done with the proper allowances for floor slabs, forms and centers. Bottom of foundation shall be approximately level, clean and clear of loose materials and lower sections true to size. All roots, stumps, organic materials and weathered rocks shall be removed and the cavities cleaned and filled with well-compacted sand and gravel. • Soil bearing capacities of foundation shall be as specified by the Structural engineer. Should the soil at the proposed level of footing bases be found not capable of resisting said pressure, the Architect or the Structural engineer or Project Engineer, shall be notified and they shall revise foundation details as required. • Upon completion of foundation no steel reinforcement shall be installed and concrete shall be poured until the contractor has approved the soil for each individual footing. Further supervisions for any indication of weak soil conditions before placing steel reinforcements and concrete. • After concrete for foundations is hard enough to withstand pressure resulting from fills, the materials removed from excavations shall be used for backfill around them. Backfill and fills shall be placed in layers not exceeding 150mm in thickness, and each layer shall be thoroughly compacted by wetting, tamping and rolling. <p>Gravel Fill</p> <ol style="list-style-type: none"> 1. Aggregate for subbase shall consist of hard, durable particles or fragments of crushed stone, crushed slag, or crushed or natural gravel and filler of natural or crushed sand or other finely divided mineral matter. The composite material shall be free from vegetable matter and lumps or balls of clay, and shall be of such nature that it can be compacted readily to form a firm, stable subbase. 	

2. The subbase material shall conform to Table 200.1, Grading Requirements

Table 200.1 - Grading Requirements

Standard, mm	Sieve Designation		Mass Percent Passing
	Alternate US Standard		
50	2"		100
25	1"		55 - 85
9.5	3/8"		40 - 75
0.075	No. 200		0 - 12

3. The fraction passing the 0.075 mm (No. 200) sieve shall not be greater than.
 4. 0.66 (two thirds) of the fraction passing the 0.425 mm (No. 40) sieve.
 5. The fraction passing the 0.425 mm (No. 40) sieve shall have a liquid limit not greater than 35 and plasticity index not greater than 12 as determined by AASHTO T 89 and T 90, respectively.
 6. The coarse portion, retained on a 2.00 mm (No. 10) sieve, shall have a mass percent of wear not exceeding 50 by the Los Angeles Abrasion Tests as determined by AASHTO T 96.
 7. The material shall have a soaked CBR value of not less than 25% as determined by AASHTO T 193. The CBR value shall be obtained at the maximum dry density and determined by AASHTO T 180, Method D.
 8. Surface Preparation. The existing surface shall be graded and finished as provided under Item 105, Subgrade Preparation, before placing the subbase material.
9. Placing
- a) The aggregate sub-base material shall be placed at a uniform mixture on a prepared subgrade in a quantity which will provide the required compacted thickness. When more than one layer is required, each layer shall be shaped and compacted before the succeeding layer is placed.
 - b) The placing of material shall begin at the point designated by the Engineer. Placing shall be from vehicles especially equipped to distribute the material in a continuous uniform layer or windrow. The layer or windrow shall be of such size that when spread and compacted the finished layer be in reasonably close conformity to the nominal thickness shown on the Plans.
 - c) When hauling is done over previously placed material, hauling equipment shall be dispersed uniformly over the entire surface of the previously constructed layer, to minimize rutting or uneven compaction.

VIII. RSB WORKS	2,429.48 kgs
<ul style="list-style-type: none"> • All reinforcement shall be placed in accordance with plans furnished by the Engineer. In case of any doubt or ambiguity in placing of steel, the Contractor shall consult the Engineer whose decision shall be final in such cases. • Steel reinforcing bars to be used for this project shall consist of standard deformed structural bars meeting ASTM specifications. All reinforcement shall be placed in accordance with plans furnished by the Engineer. • All reinforcing steel bars used shall be new and free from rust, oil, defects, grease or links. All loose rust or scale, adhering materials and all oil or either materials which tend to 	

destroy bond between the concrete and the reinforcement shall be removed before placing the steel and before concreting begins.

- The steel reinforcements for concrete shall be formed accurately according to the sizes of footings, inlet works, pump house and sump, etc., where they are to be used. They shall be tied together at each bar intersection with Gauge No. 16 G.I. wire or by welding.
- All main reinforcing steel used in the structure shall conform to ASTM Grade 40 (Intermediate Grade) with yield strength of 40 ksi (276 MPa).
- All temperature bars shall conform to ASTM Grade 30 Structural Grade with minimum yield strength of 30 ksi (207 MPa).
- Always apply red oxide for the exposed RSB to eliminate rusting.
- All hooks shall be in accordance with all standard hooks and anchorages specified in ACI 318-83 Building Code.

IX. FORMS WORKS

420.00 bd.ft

- Provide forms that will produce correctly aligned concrete. Column forms shall be checked for plumpness before concrete is deposited. Hand holes shall be provided in column forms at lowest points of pour lifts to render this space accessible for cleaning.
- Joints in forms shall be horizontal or vertical. Lumber once used in forms shall be nailed withdrawn and surfaces to be in contact with concrete shall be thoroughly wetted with water in advance of pouring. Woods to be used shall be kiln dried and treated with anti-termite chemical. And all lumber surfaces in contact with concrete and masonry shall receive one brush of bituminous paint.
- Immediately after the removal of the form, all projecting wires and bolts and other devices used for holding forms shall be cut off at least one-half centimeter beneath the finished surfaces. All holes and defects shall be thoroughly wetted and then painted up solid with cement putty mortar of the same proportions as the mortar used in the body of the work. All parts protruding beyond the surfacing shall be treated in such manner as to effectively remove all the lines and marks impressed by the form works.
- Forms shall be removed in a manner which will prevent damage to the concrete and shall not be removed until the concrete has attained sufficient strength to support its own weight and any loads that may be placed on it. Side forms of beams and girders may be removed earlier than the bottom forms but additional posts or shoring must be placed under the beams or girders until they have attained their strength. Forms shall not be removed until approval of the Design Engineer. Any repair of surface imperfections shall be performed at once and airing shall be started as soon as the surface is sufficiently hard to permit it without further damage.

X. CONCRETE WORKS

30.00 cu.m

- This section covers all the materials as cement, aggregates, water, admixtures and proportioning, mixing, transporting, placing, finishing, curing and protecting of concrete, including supplies, equipment, tools and all other incidentals necessary for concrete works.
- All the applicable provisions of the latest revision of the ACI Building Code (ACI- 318 -85) and American Society for Testing Materials (ASTM) shall govern in all cases not specifically provided for herein.
- All cement requirements of concrete works for the contract shall contractor-furnished. The cement shall conform to the requirements of the standard specification of Portland Cement (ASTM: C150 Type 1).
- Fine aggregates shall be clean, well-graded, hard, natural sand or manufactured sand or a combination of both. The minimum size of the aggregates shall not be larger than one-fifth (1/5) of the narrowest dimension between forms and not larger than three-fourths (3/4) of the minimum clear spacing between reinforcing bars, and in no case larger than two inches in diameter. Coarse aggregates shall be hard, durable, uncoated gravel, crushed gravel, free from any deleterious materials like alkali, loam, silt and any organic matter.

- Water used in making the concrete mass shall reasonably clean, potable, and free from injurious amount of oils, acids, alkali organic materials and other deleterious substances.
- Class A mixture shall be used for inlet works, pump house, sump, foundation and for all reinforced work not otherwise indicated or specified.

Mixing of concrete

- All concrete shall be machine-mixed for at least one and one-half minutes after all materials, including water, are in the mixing drum.
- The mixer shall be approved size and type which will ensure a uniform distribution of materials throughout the mass. It shall be equipped with a device for accurately measuring and controlling the amount of water in each batch.
- The first batch of concrete materials placed in the mixer shall contain a sufficient excess of cement, sand and water to coat inside of the drum without reducing the cement content of the mix to be discharged.

Specified Compressive Strength

Class	Psi	MPa
AA	4,000	27.57
A	3,000	20.68
B	2,500	17.23
C	2,000	13.78

- Class AA: For septic tanks and other work as indicated.
- Class A: For slabs, beams, and wall above grade, columns and for all reinforced work not otherwise indicated or specified.
- Class B: For slabs on grade, and the beams, footings and for such concrete work as indicated or specified. (Not indicated in the plan).
- Class C: For all concrete not reinforce except as otherwise indicated or specified. (Not indicated in the plan).

Conveying and Placing of Concrete

- Concrete shall be conveyed from mixer to form as rapidly as practicable. There will be no vertical drop greater than 1.50 meters except where suitable equipment is provided to prevent segregation and where specifically authorized by the Architect and or the Structural Engineer.
- Concrete shall be worked readily into the corners and angles of the forms and around all reinforcements and embedded items without permitting materials to segregate. Concrete shall be deposited as close as possible to its final position so that flow within the mass does not exceed two meters and consequently segregation is reduced to a minimum near forms or embedded items, or elsewhere is directed, the discharge shall be so controlled that the concrete may be effectively connected into horizontal layers not exceeding 30 centimeters in depth within the maximum lateral movement specified.

Curing

- Compressive strength of concrete at 28 days curing period shall attain 3000 psi (20.7 MPa) with well graded aggregates having a maximum size of 2 inches (50mm).

XI. MASONRY WORKS

30.00 sq.m

- The cells of the concrete hollow blocks to be laid shall be filled with 1:3 cement mortars (1 part Portland cement and three parts sand, by volume). They shall be reinforced with

10mm diameter horizontal deformed bars every three blocks and 10mm diameter vertical bars deformed bars at 800mm O.C. Unless specified on the elevation drawing, the cement plaster mixture for masonry walls shall be 1:3 (1 part cement, and 3 parts sand, by volume).

Minimum Compressive Strength of Concrete Hollow Blocks is as follows:

Load Bearing	700 psi
Non-Load Bearing	350 psi

- Structural grade, billet steel plain bars conforming to the requirements of "Specifications for Billet Steel Bars of Concrete Reinforcement" ASTM A-615 Allowable $f_s=20,000$ psi deformed.
- Held in place by horizontal and vertical reinforcing and interior surfaces of hollow blocks shall be thoroughly soaked with water before laying. Hold all units in storage for a period not less than 28 days (including curing period) and do not deliver prior to that time unless strength and other tests indicate compliance with these specifications.
- Mortar aggregates shall be natural river sand, clean and free from soluble salts and organic matter, graded from fine to coarse, compatible with the thickness of joints in which used. Mix mortar from three to five minutes in such quantities as are needed for immediate use. No re tempering will be permitted if mortar stiffens because of premature setting. Discard such materials as well as those which have not been used within one hour after mixing.
- Lay units in common bond with uniform causing and jointing. All concrete block jointing shall be of uniform thickness. Butler vertical and horizontal jointing full with mortar. Bond course and corners and intersections and tie to abutting walls. Do not lay cracked, broken or deface blocks. Cut edges shall be clean and sharp. The first row of block shall be properly and thoroughly anchored to the concrete columns, walls of slabs. Course shall be laid straight and well plumbed.

Plastering

- The Plastering of CHB wall should be 20mm thick using Portland Cement and sand. The mixture ratio should be (1:2).
- High-Performance Acrylic Skim coat is a high performance, acrylic-based special bonding paste for interior and exterior use that is mixed with cement and applied on concrete to correct surface imperfections prior to painting. It repairs bubbles, honeycomb and concrete defects on waviness and plumbness from 1mm to 3mm thick.

XII. IRON WORKS

7,619.13 kgs

- All material and workmanship shall conform to the latest edition of American Institute of Steel Construction Manual unless otherwise shown or noted.
- All Structural Steel including that of gusset plates, wide flanges, hssp and the likes shall conform to ASTM A36 with yield strength of $F_y= 248$ MPA.
- All bolts and Threaded Fasteners shall conform to the ASTM A325.
- Pull out testing shall be performed to the 10% of the total anchor bolts shall be done in situ by the contractor/supplier.
- All welds shall be E70XX electrode and shall develop at least 100% of the strength of the connected member.
- Dye penetration test shall be performed to the 10% of the total length of the welds done with the building by the contractor.
- All double angle structural members must be provided with the filler plates at 0.30m O.C. maximum spacing.

- All exposed structural steel members shall have at least two coats of grey lead or zinc chromate primer paint.
- All trusses, beams and girders must be provided with a camber at a rate of 3mm for every 3.0M of clear span in a parabolic layout.
- All structural steel should be tested for yield strength as per ASTM A36 and at least yield a strength of $F_y=248$ MPA.
- The contractor shall submit fabrication drawings to the supervising engineer the shop/fabrication drawings for inspection and approval before works shall commence.
- The supervising engineer shall inspect and verify the steel assembly before installation.

XIII. PAINTING WORKS

100.00 sq.m

- All painting works for this project, except as hereinafter specified, shall be done with the use of paint products.
- The contractor shall supply all labor, paint materials, tools, staging and equipment necessary, and shall perform all painting and finishing work as shown in the schedule of painting and finishing work for this project. The painting contractor shall store his materials in one place in the building to be kept near and clean, care being taken in the storage of paints, oils, etc. to prevent danger of fire. Oil rags shall be kept in metal containers and shall be removed from the building every end of the working day. All paintings are to be done in good workmanship manner. No painting shall be done on all surfaces before neutralizing and proper sand papering is through. No painting on damp weather is to be done.
- All concrete surfaces to be painted shall first be coated with concrete neutralizer. Exterior walls shall be finished with Solvent-Based Acrylic Paint, first coated with Penetrating sealer. Interior wall shall be finished with Latex Paint, first Painted with concrete sealer. Steel or iron surfaces must first be painted with anti-rust proofing. All color schemes for painting the building shall be decided by the Architect and end user, to be implemented upon completion of the construction. The Contractor shall submit color samples and finishes for approval by the Architect and End user before final application.
- Cracks and holes shall be filled with putty compatible with the surface to be painted and the paint materials to be applied. All wooden door jambs and cabinet frames and shelves to come in contact with masonry surfaces must be painted with SOLIGNUM wood preservative.
- Upon completion of the painting works, the painting Contractor shall remove any paint spots from all finished work. He shall present his work to the in charge of the Construction, free from blemishes and rubbish generated by his workers.
- Before any painting is done, all surfaces shall be cleaned, smoothed and freed from dust, dirt, grease, mortar, rust and other foreign substances. All parts where paint remover has been used shall be washed off with paint or lacquer thinner. All paints shall be spread evenly and carefully.
- All paint and paint materials shall be delivered to the building site in unbroken packages, bearing the marks of the specified brand. No adulteration of specified paints with other brands shall be allowed without the consent of the Architect and End user.
- All other materials specifically indicated and illustrated on plans shall be taken as part of this specification regardless whether or not written and such other materials shall be approved by the end user before they are set in place.

XIV. ROOFING & SIDING WORKS

448.44 l.m

- All materials shall be installed in accordance with the plans or unless otherwise specified by the Engineer. Care shall be exercised in storing, handling, and to prevent any damage to roofing siding sheets. The sheets shall be of the length indicated of the plan, or greatest length suits the purlins. Extreme cares shall be exercised in drilling pilot holes for fastening

centered in valleys or crowns as applicable. All metal shaving shall be swept from roofs in competition to prevent rusting and discoloration.

- The roof/siding used is 0.6 mm thick pre-painted Rib-type GI sheet. All sheets to be supported at both ends, at the middle end laps to be properly secured.
- Ridge rolls and hip rolls to be used shall be compatible with the Rib-type roofing with a thickness of 0.6mm. They shall be lap the roofing sheets at least 25 cm. The ridge roll and hip rolls shall be riveted to the roofing sheets, in addition to the rivets engaging the GI straps in securing the roofing sheets to the purlins.

XV. WINDOWS AND DOORS

29.50 sq.m

Roll-up doors and Frames

a) Scope

1. This section shall include roll-up doors and frames as indicated in the drawings or as specified herein, complete.

b) Delivery, Storage and Protection

1. All painted doors and frames and other steel works delivered to the site shall be stored and handled in a manner as to protect them from damage during the construction period. Installation shall commence only when all flooring finishes have been completed.

c) Materials

1. Roll-up doors and frames shall conform to the best commercial standard as approved and as specified herein.
2. Roll-up doors, louvers and frames shall be factory fabricated from steel conforming to ASTM Specifications A36. Steel shall be zinc coated stretcher level degree of flatness, pickled and oiled of hot rolled materials, and with manufacturer's standard gauges specified hereinafter for the various uses.

d) Construction of Frames

1. Pressed Steel Frames for doors and other openings shall be of the combination buck, frame, frame and trim type; sizes and details as shown and shall include tubular mullions and transform bars used in conjunction with the frames. Frames shall be gauge 14, knock-down type or welded-unit type, and of continuous channel.
2. Welded Unit Type Frames shall have headers and jambs secured at the corners either by internal welding of faces by welded splice plates and shall be further secured at the rabbet either by welding or by mechanical interlock.
3. The headers and jambs, as an alternate, shall be secured at the corners by external welding of faces and grounded smoothly. Faces of frames at junction of head and jamb shall present neat line joints. Mullions and transform bars shall be member with heads or jambs, as applicable and shall be butt-welded thereto.
4. Anchors, Frames shall be provided with a minimum of three wall anchors per jambs as required for the adjoining wall construction, including ceiling strut anchors as required by the drawings, and anchors for attachment of frame to the floor. Anchors shall be of not less than 18-gauge steel.

PVC Flush Door (see schedule)

- This section includes PVC flush door by 'NELTEX" or approved equal.

Analok Windows (see schedule)

- a) Scope
 1. This section includes analok frame windows, complete [Glass, Casement and Fixed].

- b) Storage and Protection
 1. Materials shall be stored out of contact with the ground and shall be arranged to avoid bending, warping or otherwise damaging the fabricated windows.

- c) Analok Frame Windows
 - 1) Shall be horizontal type; frames shall be standard sizes or as indicated with powdered coated finish. Glass shall be tempered, 6mm thick, tinted or clear, as specified in section: Glass and Glazing and as indicated.

- d) Weather Stripping
 - 1) Shall be standard type of the manufacturer as approved, and shall be easily replaced without special tools.

- e) Installation
 - 1) Windows shall be installed without forcing or distortion so that sills and heads are level and jambs are plumb. Windows frames shall be securely anchored into the supporting construction. Joints between aluminum windows and aluminum members including mullions shall be set in mastic and weather stripping of the type recommended by the window manufacturer and as approved, to provide completely water-tight joints.

- f) Submittal Requirements
 - 1) Prior to fabrication and delivery, brochure, catalogs or shop drawings, samples of analok frames, mullions, weather stripping, type of finish and glass shall be submitted for approval.

XVI. PLUMBING WORK

1.00 lot

All plumbing and sanitary work for the building will be done in accordance with the provisions of the National Plumbing Code of the Philippines and such other regulations prescribed by the plumbing and sanitary regulations of the Municipality.

Excavation

- Trenches of all underground pipelines shall be excavated to the required depth and grades. Bell holes shall be provided so that the pipe will rest on well-thumped solid ground for its entire length. Where rock is encountered, excavation shall extend to a depth six inches below the pipe bottom and before pipe is laid, the space between the bottom of pipe or other approved filling materials.

Pipe laying

- Pipe in trenches shall be laid true to line and grade on a stable and suitable prepared foundations, each section of the pipe being bedded and bottom of the trench shaped to fit the lowest quadrant of the pipe circumference. All pipes, except concrete pipes, that will run underground shall be protected with concrete, Class "B" casing with a minimum protection of four inches around the perimeter of the pipe, then inches below the finished grade. Where vehicles shall pass over the pipe laying shall be made deeper, depth shall be lower than 0.90 meters. Pipes to be used for water lines must be PPR type.

Backfilling

- After pipe lines have been tested, inspected and approved prior to the backfilling all forms and bracing shall be removed and the excavated materials cleaned from debris. Materials for backfilling shall be free from large or big rocks. Backfilling shall be placed in horizontal layers, properly moistened and compacted to an optimum density that will prevent excessive settlement and shrinkage. Maximum 6 inches layer of backfill shall be overlaid for another compaction process.

Installation

- Install plumbing fixtures free and open to afford easy access for cleaning. Install plumbing fixture as indicated on drawings, furnishing all brackets, cleats, plates and anchors required to support fixtures rigidly in place. Install all fixtures and accessories in locations directed in accordance with manufacturer's instructions, minimizing pipe fittings. Protect items with approval means to maintain perfect conditions. Remove worked damage or defective and replace with perfect work without extra cost to end user.
- Provide in each bathroom and toilet a standard water closet, compact type, complete with fittings and all incidental materials of local procedures or equally good quality. Provide in each bathroom and toilet and other rooms as provided with a standard lavatory, with complete fittings. Shower heads shall be provided in all bathrooms, spray type, shivel head, chrome plated with valve. Provide and set in place soap holders for each bathroom. Provide and set in place holders in each toilet near the water closet. Provide and set in place as shown in the plans, floor drains, and traps complete.
- All soil and drainage pipes shall have a minimum slope of 1% and a maximum slope of 2%. Vertical pipes shall be secured strongly by hooks to building frame. Provide suitable brackets or chairs at the floors from which they can start. Where an end or circuit vent pipe from any fixtures or any line of fixtures is connected to a vent line serving other fixtures, connection shall be at least four feet (1.20 meters) above floor in which fixtures are located, to prevent use of any vent line as a waste. Horizontal pipes shall be supported by well-secured strap hangers.

Rough-In

- Provide correctly located opening of proper sizes where required in walls and floors for past of pipes. All items to be embedded in concrete shall be thoroughly cleaned and free from all rust, scale and paint. All changes in pipe size on soil wash and draft lines shall be provided with reducing fitting or recesses reducers. For changes in pipe sizes, provide reducing fittings. High corrosive natural ground within site shall be taken into account by the plumber. Protective features shall be installed to prevent corrosion of all water pipes installed underground.
- Extend piping to all fixtures, outlets and equipment from gate valves installed in the branch, near the riser. All pipes shall be cut accurately to measurements, and worked into place without springing or forcing. Care shall be taken as not to weaken structural portion of the building.

XVII. ELECTRICAL WORKS	15.00 outlet
<ul style="list-style-type: none">• The work throughout shall be executed in the best and thorough manner under the direction of and to the satisfaction of the Architect or the Designer, who will jointly interpret the meaning of the drawings and specifications and shall have the power to reject any work and materials which, in their judgment are not in full accordance therewith.• Approval of equipment and materials: All electrical materials shall be new and must meet the requirements of the specifications and shall bear the inspection label wherever such standard has been established.	

- All wires shall be copper, soft-drawn and annealed, shall be of 99% conductivity, shall be smooth and true and of cylindrical form and shall be within 1% of the actual size called for.
- All outlets of whatever kind, for all items, shall be provided with suitable fittings, which shall be either a box or other devices especially designed to receive the type of fittings to be mounted thereon.
- The Contractor shall consult with the Architect and the Engineer as to the nature of the various fittings to be used before installing and shall conform strictly in the use of such fittings when finished will be completed design.
- Junction and pull boxes per code gage steel shall be provided as indicated or as required for facilitating the pulling of wires and cables. Pull boxes in finished places shall be located and installed with the permission of and to the satisfaction of the Architect and Engineer. Sizes shall be subject to the approval of the Engineer.

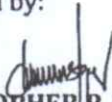
XVIII. DA LOGO

1.00 lot

- The Department of Agriculture logo shall be made of stainless steel letters in acrylic paint with a diameter of 0.8m.

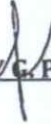
The above specifications are intended for the Feed Mill Processing Facility project at Brgy. 40 Buyon, Bacarra, Ilocos Norte.

Prepared by:



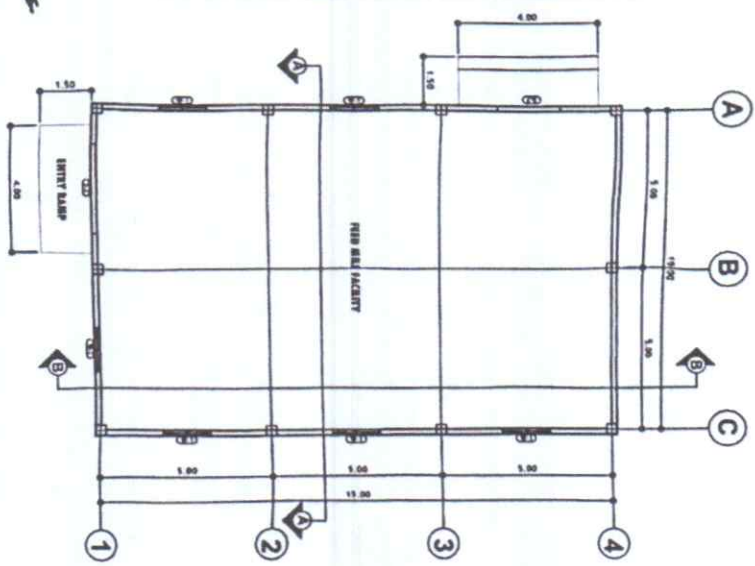
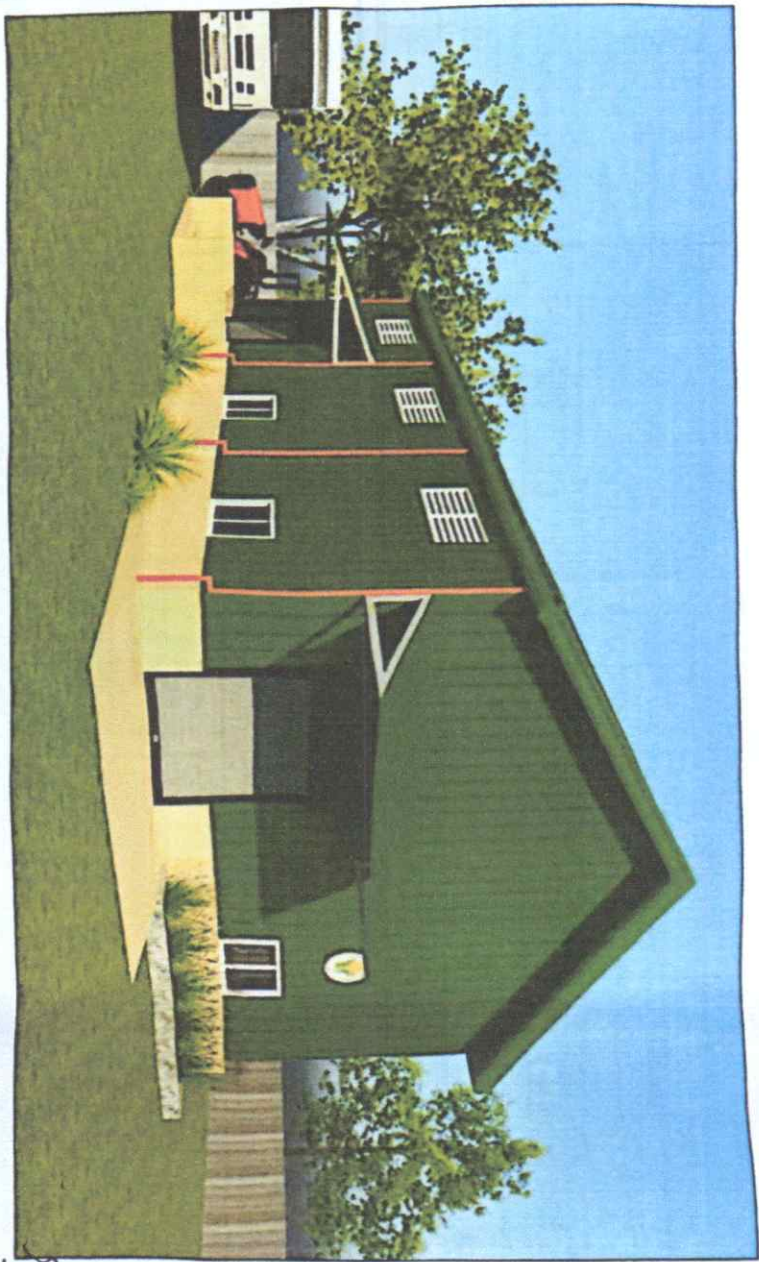
CHRISTOPHER P. TIBOC, ABE
Engineer II

Concurred by:



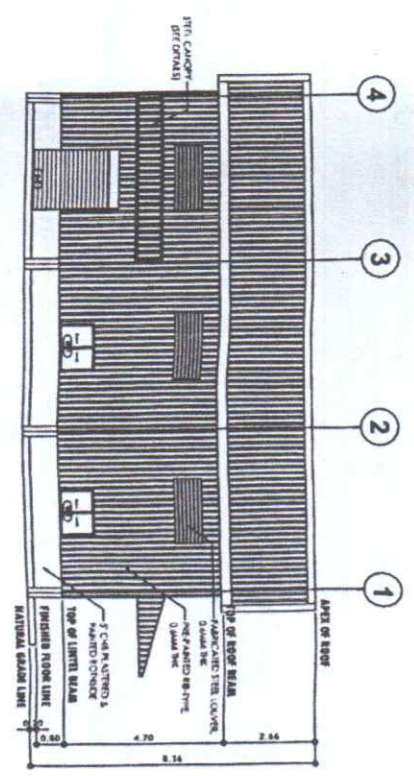
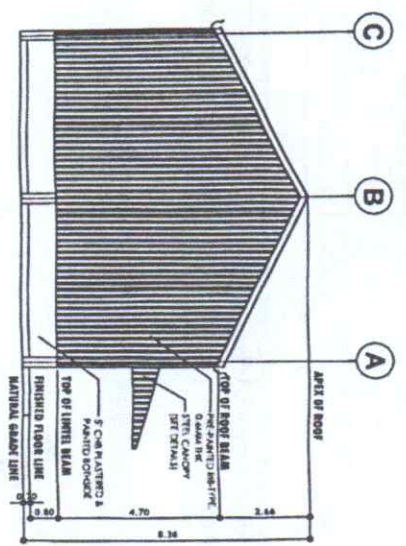
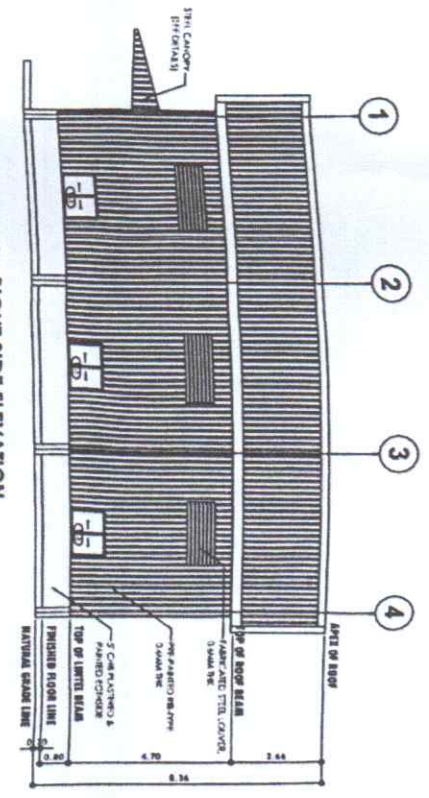
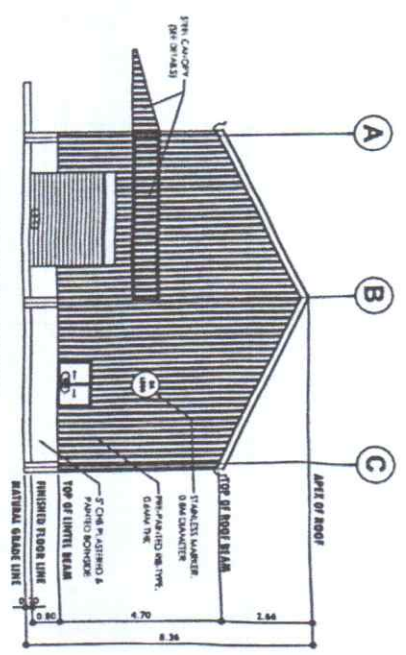
MARK HARRY C. PASTOR, ABE
Chief, RAED



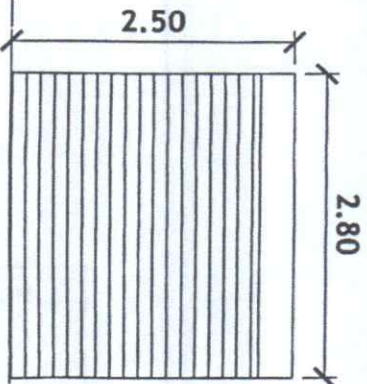


GROUND FLOOR PLAN
SCALE 1:150MM

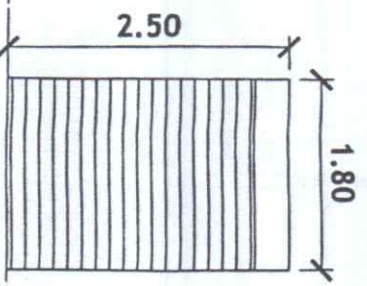
<p>DEPARTMENT OF AGRICULTURE FISHERIES AND FORESTRY KARNATAKA GOVT. ENGINEERING COLLEGE BANGALORE</p>	<p>PROJECT TITLE CONSTRUCTION OF FEED MILL, PROCESSING FACILITY</p>	<p>PREPARED BY AR. <i>[Signature]</i> E. J. L. MORALES 2020</p>	<p>CHECKED BY MARK HARRY G. PASTOR, ABE 2020</p>	<p>REVISIONS BY DENNIS J. TACTAG, ABE 2020</p>	<p>APPROVED BY <i>[Signature]</i> JOSEPH PASCUAL DYVA 2020</p>	<p>SHEET NO. A-1</p>
---	--	---	--	--	--	---------------------------------



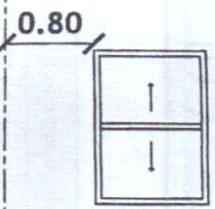
<p>DEPARTMENT OF AGRICULTURE Fisheries and Forestry</p>	<p>PROJECT TITLE</p> <p>CONSTRUCTION OF FEED MILL PROCESSING FACILITY</p>	<p>DESIGNED BY</p> <p>ARIEZ HILAL L. MORALES</p>	<p>CHECKED & REVIEWED BY</p> <p>MARK HARRIS PASTOR, ABE</p>	<p>RECOMMENDING APPROVAL</p> <p>DENNIS I. ACTAC, ABE</p>	<p>APPROVED</p> <p>JONAS PASUALOYM</p>	<p>SHEET NO.</p> <p>A-2</p>
<p>REPUBLIC OF THE PHILIPPINES DEPARTMENT OF AGRICULTURE Fisheries and Forestry</p>	<p>PROJECT NO.</p> <p>101-101-101-101</p>	<p>DATE</p> <p>101-101-101-101</p>	<p>SCALE</p> <p>1:150 MMS</p>	<p>PROJECT NO.</p> <p>101-101-101-101</p>	<p>DATE</p> <p>101-101-101-101</p>	<p>SHEET NO.</p> <p>A-2</p>



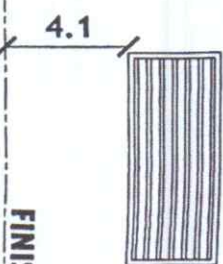
D-1
 DESCRIPTION: ROLL-UP DOOR,
 HAND CHAIN HOIST
 DIMENSION: 2.80M X 2.50M
 SETS: 1
 LOCATION: MAIN DOOR



D-2
 DESCRIPTION: ROLL-UP DOOR,
 HAND CHAIN HOIST
 DIMENSION: 1.80M X 2.50M
 SETS: 1
 LOCATION: SIDE DOOR



W-1
 DESCRIPTION: ANALOG SLIDING
 DIMENSION: 1.00M X 1.4M
 SETS: 6
 LOCATION: WORKING AREA

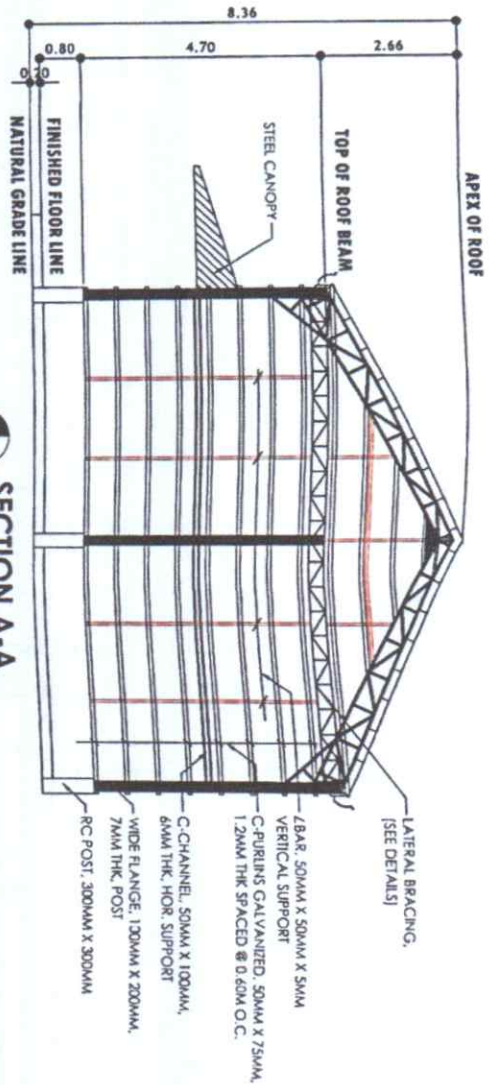


W-2
 DESCRIPTION: FABRICATED STEEL LOUVER, 0.6MM THK
 DIMENSION: 2.00M X 0.8M
 SETS: 6
 LOCATION: WORKING AREA

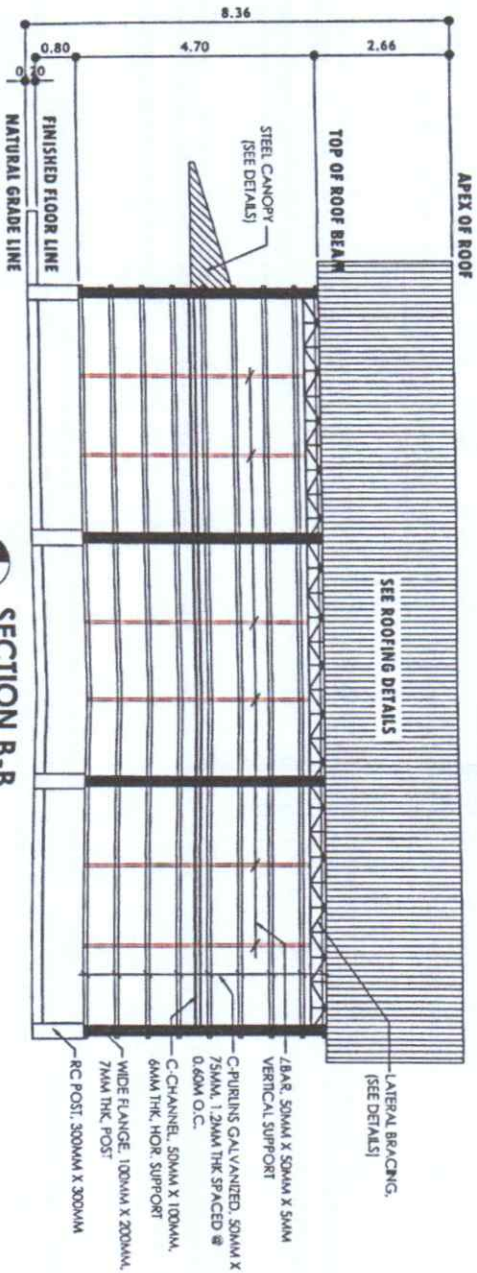
FINISHED FLOOR LINE



<p>DEPARTMENT OF AGRICULTURE BUREAU OF AGRICULTURAL EXTENSION SERVICES Regional, Administrative, Extension Division</p>	<p>PROJECT TITLE</p> <p>CONSTRUCTION OF FEED MILL PROCESSING FACILITY</p>	<p>PREPARED BY</p> <p><i>AR. BERNARDO L. MORALES</i> AR. BERNARDO L. MORALES DESIGNER</p>	<p>CHECKED/REVIEWED BY</p> <p><i>MARK HARRIS</i> MARK HARRIS, PASTOR, ABE CIVIL ENGINEER</p>	<p>RECOMMENDING APPROVAL</p> <p><i>DENNIS I. TACTAG</i> DENNIS I. TACTAG, ABE SUPERVISOR OF OPERATIONS</p>	<p>APPROVED</p> <p><i>JOHN B. PASSED</i> JOHN B. PASSED, DVM VETERINARY CONSULTANT</p>	<p>SHEET NO.</p> <p>A-3</p>
---	--	---	--	--	--	------------------------------------

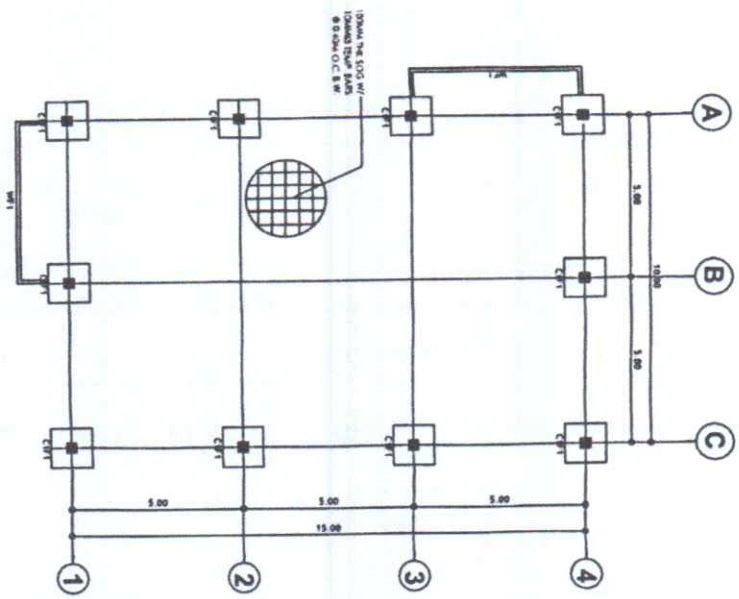


SECTION A-A
SCALE 1:100 MTS

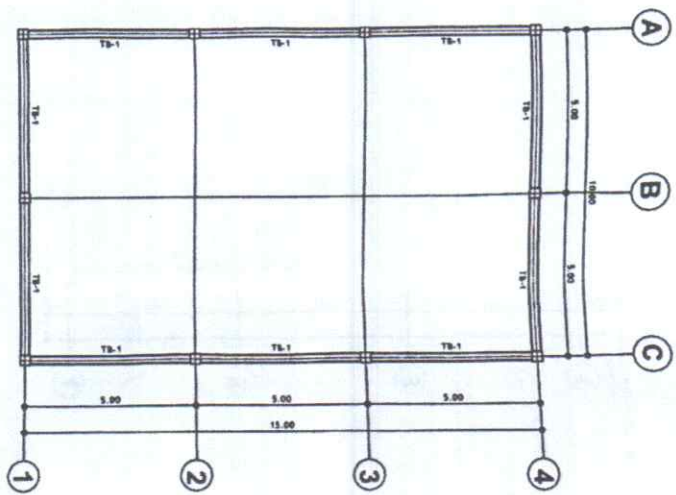


SECTION B-B
SCALE 1:100 MTS

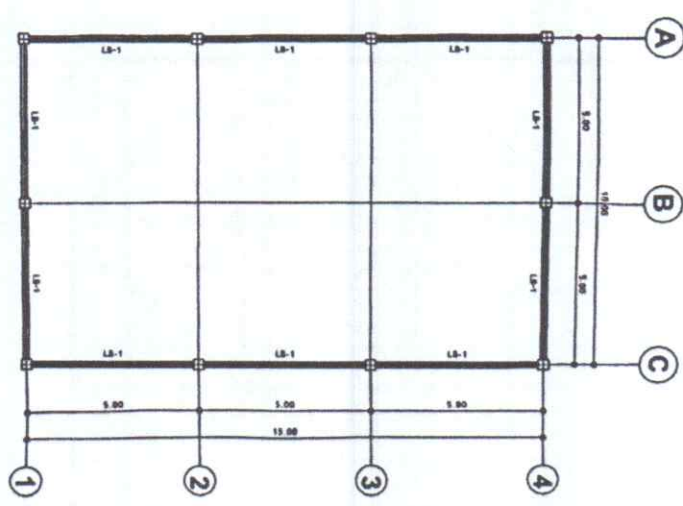
<p>REVISIONS FROM THE OFFICE OF THE DEPARTMENT OF AGRICULTURE National Food Service, Inc. Rural Administrative Extension Division</p>	<p>PROJECT TITLE CONSTRUCTION OF FEED MILL PROCESSING FACILITY</p>	<p>PREPARED BY AR. HERRERA L. MORALES</p>	<p>CHECKED & REVIEWED BY MARK HARRY CASTOR, ABE</p>	<p>RECOMMENDING APPROVAL DEMETRIUS TACTIC, ABE</p>	<p>APPROVED JOHN HERRERA CASTOR, ABE</p>	<p>SHEET NO. 5-1</p>
--	---	--	--	---	---	---------------------------------



FOUNDATION PLAN
SCALE 1:50 M/S

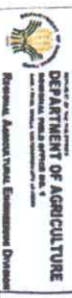


TIE BEAM PLAN
SCALE 1:50 M/S



LINTEL BEAM PLAN
SCALE 1:50 M/S

PREPARED FROM THE OFFICE OF THE	PROJECT TITLE	PREPARED BY	CHECKED & REVIEWED BY	REVISIONS/NO. APPROVAL	APPROVED	SHEET NO.
---------------------------------	---------------	-------------	-----------------------	------------------------	----------	-----------



DEPARTMENT OF AGRICULTURE
Regional Administrative Commission - Division Office - Marikina City

CONSTRUCTION OF FEED MILL PROCESSING FACILITY

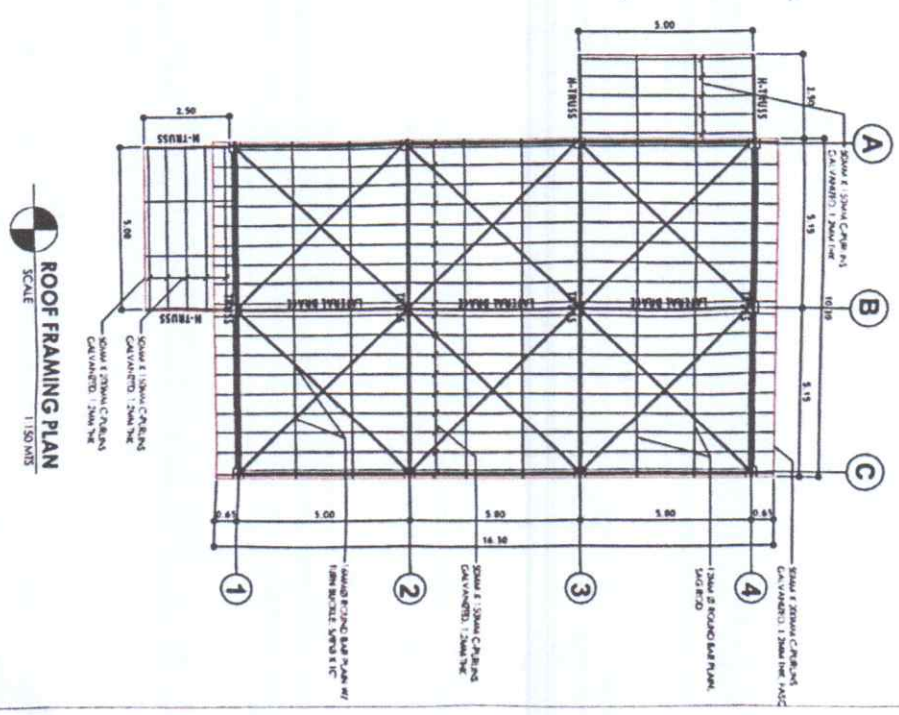
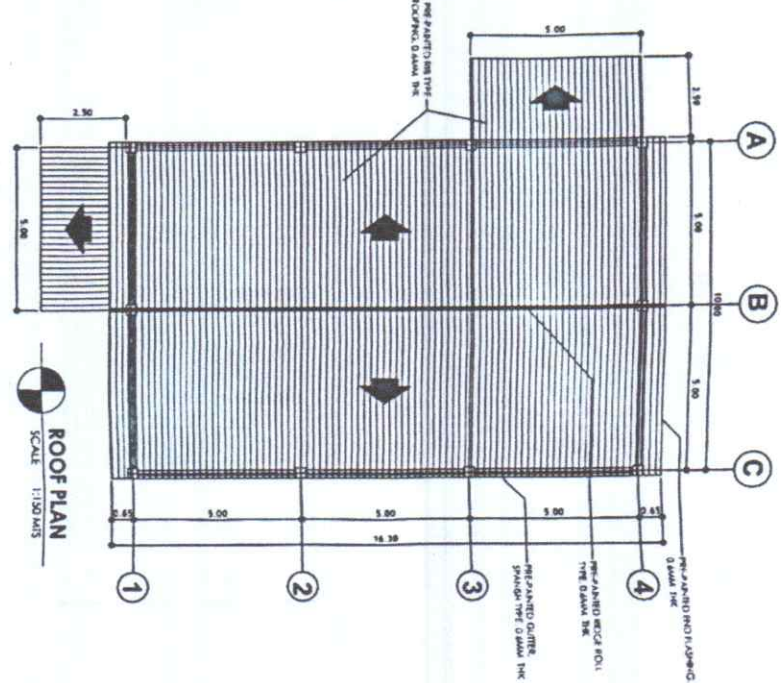
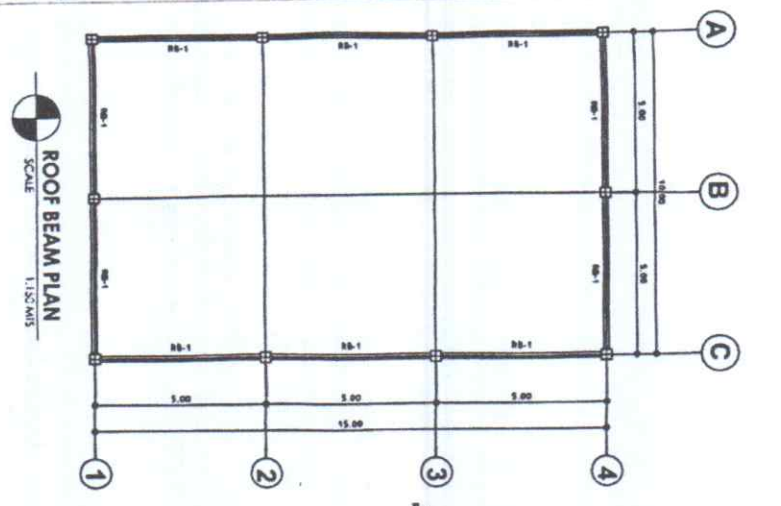
AR. JEROME L. MORALES
ARCHITECT

MARK HARRY G. PASTOR, ABE
CHECKER

DENNIS I. TACOGAC, ABE
REVISIONS/NO. APPROVAL

JOSHY R. CASCONA, DVM
APPROVED

S-2



<p>DEPARTMENT OF AGRICULTURE BUREAU OF PLANNING AND DESIGN Regional, Provincial, Environmental Division</p>	<p>PROJECT TITLE CONSTRUCTION OF FEED MILL PROCESSING FACILITY</p>	<p>PREPARED BY AR. JERAZA E. L. MORALES</p>	<p>CHECKED & REVIEWED BY MARK HARRY G. PASTOR, ABE</p>	<p>REVISIONS APPROVAL DR. VINS I. YACAC, ABE</p>	<p>APPROVED JOHN B. PASUAL, DVM</p>	<p>SHEET NO. S-3</p>
---	---	--	---	---	--	---------------------------------

BEAM SCHEDULE

Beam Mark	Section		LAYER	Left Support		Mid Support		Right Support		Web Bars	Stirrups	Remarks
	B (mm)	H (mm)		Top	Bottom	Top	Bottom	Top	Bottom			
TB-1	250	300	1	3-16 \emptyset	2-16 \emptyset	2-16 \emptyset	3-16 \emptyset	3-16 \emptyset	2-16 \emptyset	-	10 \emptyset -1@50mm; 4@100MM; 4@150mm; REST @200mm o.c.	TYPE - 1
LB-1	150	200	1	2-16 \emptyset	2-16 \emptyset	2-16 \emptyset	2-16 \emptyset	2-16 \emptyset	2-16 \emptyset	-	10 \emptyset -1@50mm; 4@100MM; 4@150mm; REST @200mm o.c.	TYPE - 1

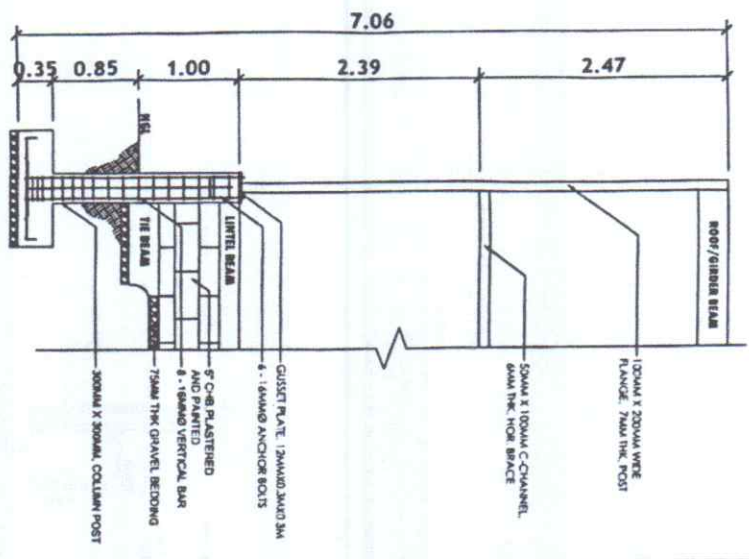
FOOTING SCHEDULE

Mark	Dimensions (mm)			EXCAVATION DEPTH	REINFORCING STEEL BARS	NOTES
	Length	Width	Depth			
F-1	1200	1200	350	1200mm BELOW NGL	6-16mm \emptyset BOTHWAYS	ISOLATED FOOTING

COLUMN SCHEDULE

C-1

SIZE:	300 x 300mm
REBAR:	8-16mm \emptyset
CONFINEMENT:	10mm \emptyset -3@50mm; 5@100mm
TIES:	REST @ 150mm



COLUMN SECTION PLAN
SCALE 1:50 MTS

DEPARTMENT OF AGRICULTURE
CONSTRUCTION OF FEED MILL PROCESSING FACILITY

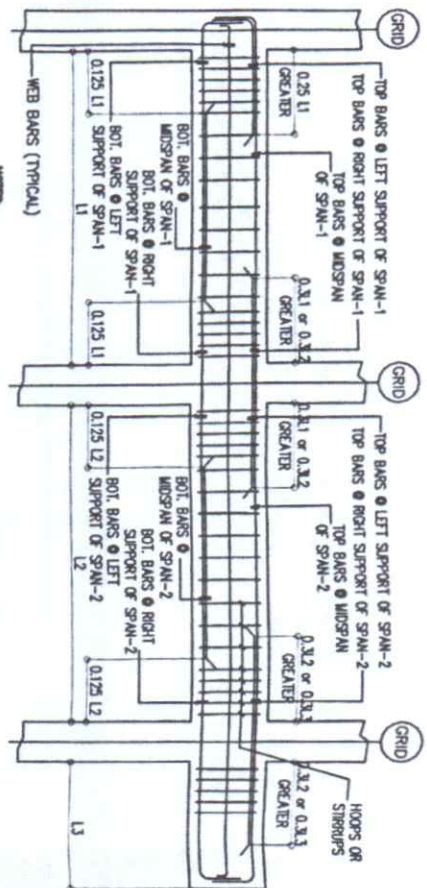
AR JHERZABEL MORALES
PROJECT ENGINEER

MARK HARRY G. TORRES, ABE
PROJECT MANAGER

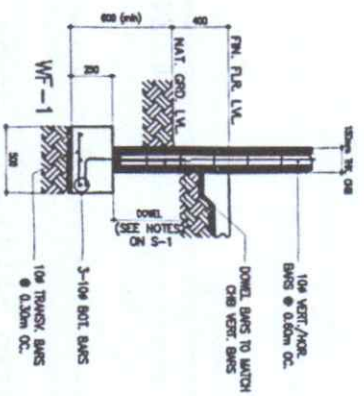
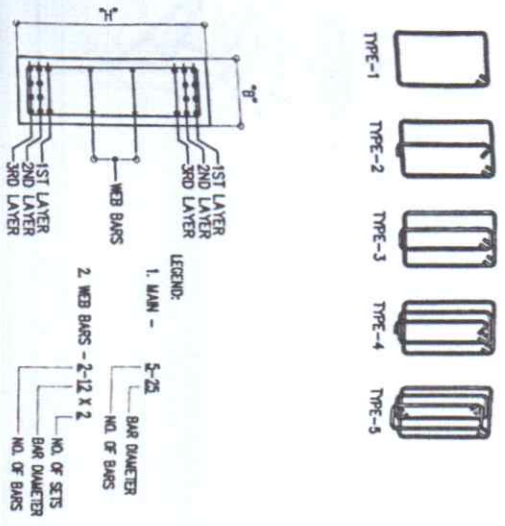
DEANNEY TACORC, ABE
PROJECT SUPERVISOR

JOYDEE TASCULAN
PROJECT SUPERVISOR

S-4

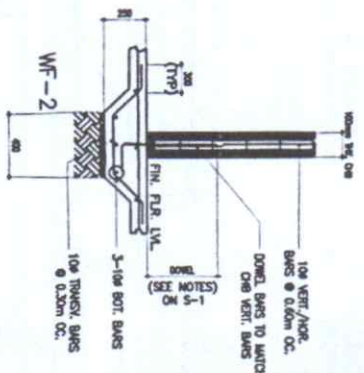


NOTES:
 1.0 NO SPICE SHALL BE MADE AT DISTANCE 2H FROM FACE OF THE SUPPORT.
 2.0 BOTTOM BARS SHALL BE SPICED WITHIN 1/4 BUT NOT LESS THAN 2H FROM FACE OF THE SUPPORT.
 3.0 TOP BARS CAN BE SPICED ANYWHERE BEYOND 2H FROM FACE OF THE SUPPORT.

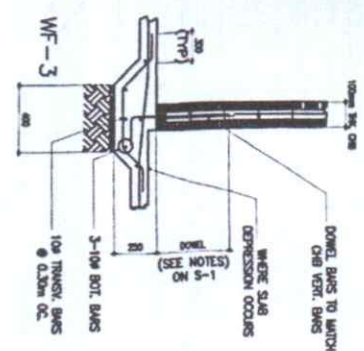


AT EDGE / PERIMETER CHB WALL

NOTES :
 ALL WALL FOOTING LOCATION MUST BE BASED ON ARCHITECTURAL PLAN



AT INTERIOR CHB WALLS



AT INTERIOR WALLS WITH SLAB ELEVATION DIFFERENCE

DEPARTMENT OF AGRICULTURE
 Regional Agricultural Extension Department

PROJECT TITLE
CONSTRUCTION OF FEED MILL

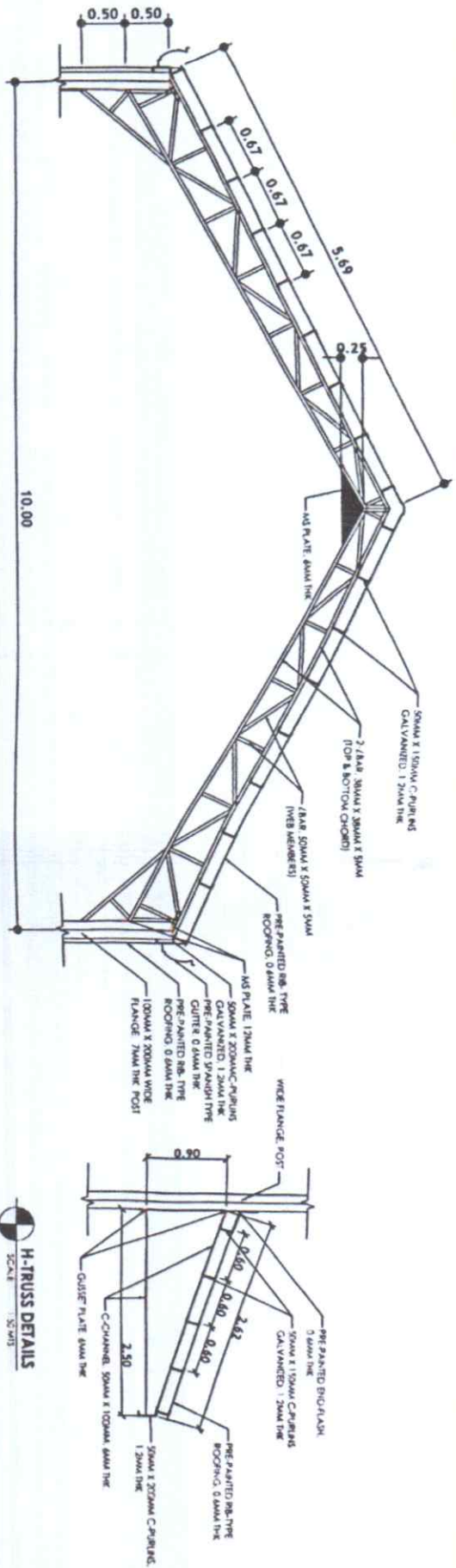
DESIGNED BY
AR. JERRY M. L. MORALES

CHECKED BY
MARK HARRY PASTOR, ABE

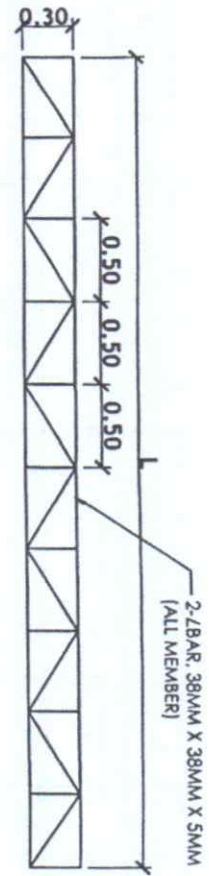
RECORDING APPROVAL
JENNIS I. TACACAG, ABE

APPROVED
JOHN P. PASCUA, ABE

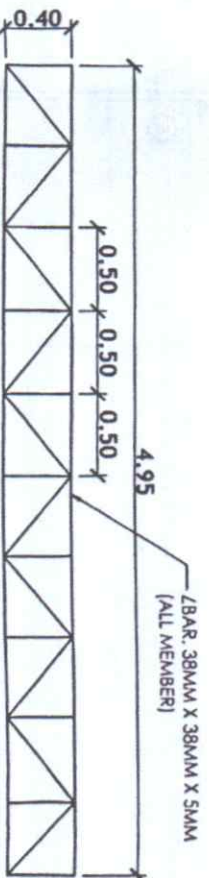
SHEET NO.
5-5




TRUSS DETAILS
SCALE 1:50 MTS

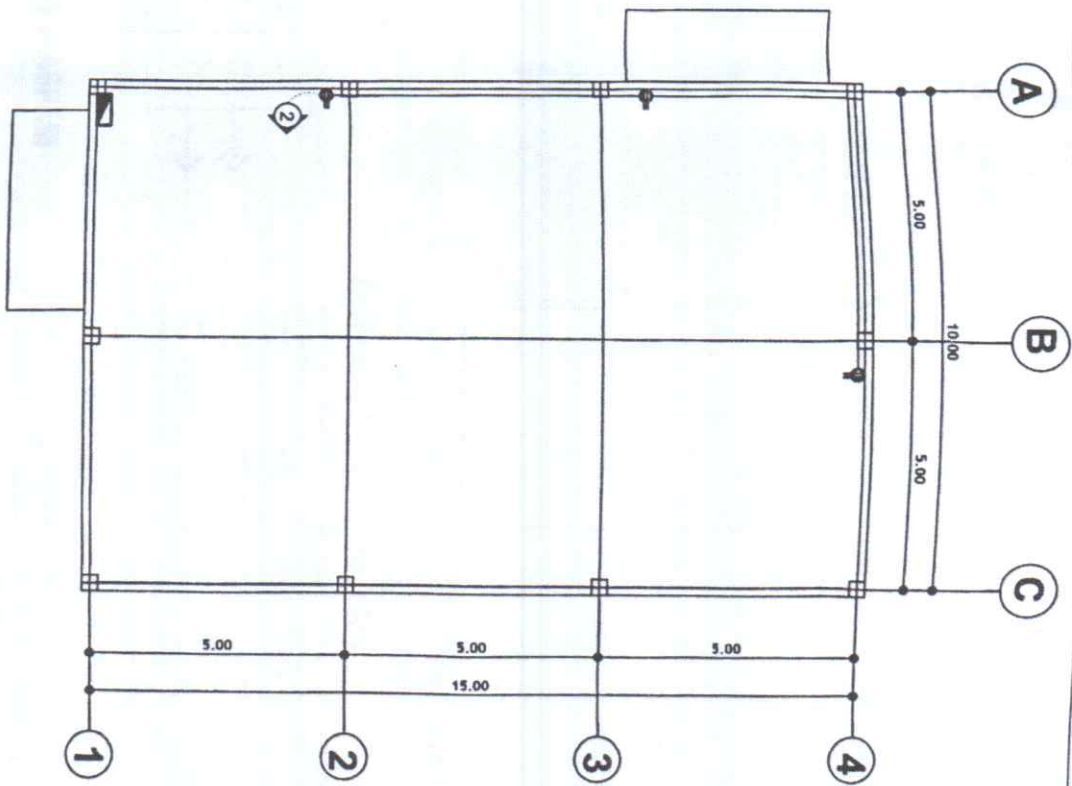
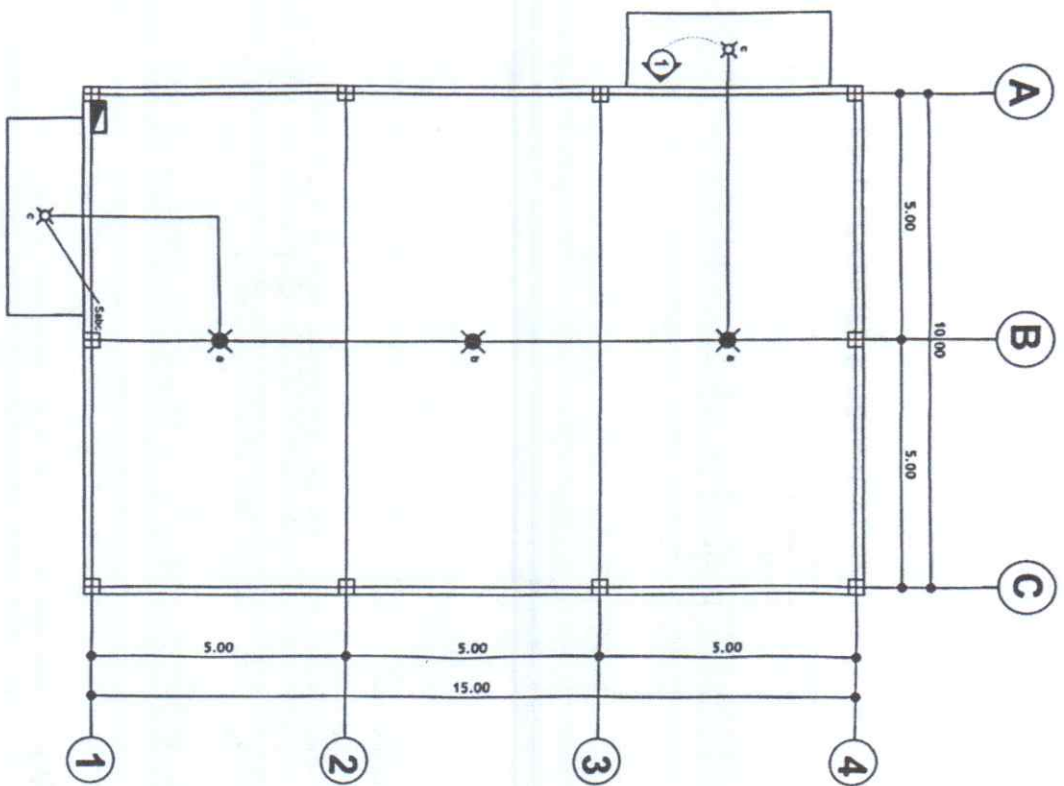


ROOF/GIRDER BEAM DETAILS
SCALE 1:30 MTS



LATERAL BRACING DETAILS
SCALE 1:30 MTS

 <p>DEPARTMENT OF AGRICULTURE Regional Administrative Service Center</p>	<p>PROJECT TITLE CONSTRUCTION OF FEED MILL PROCESSING FACILITY</p>	<p>DESIGNED BY AR DELA CRUZ, E.L. MORALES</p>	<p>CHECKED & REVIEWED BY MARK HARRY G. ASTOR, ABE</p>	<p>RECORDING SUPERVISOR DORIS L. TACOR, ABE</p>	<p>APPROVED JOHN B. PASO, CIVIL ENGR.</p>	<p>SHEET NO. 5-6</p>
--	---	--	--	--	--	---------------------------------



LIGHTING LAY-OUT
SCALE 1:150 MTS



POWER LAY-OUT
SCALE 1:150 MTS

PREPARED FROM THE OFFICE OF THE

DEPARTMENT OF AGRICULTURE
 Department of Agriculture
 Regional Office - Marikina City
 Regional, Agricultural Extension Division

PROJECT TITLE
**CONSTRUCTION OF FEED MILL,
 PROCESSING FACILITY**

PREPARED BY

ARIEZ L. L. MORALES
 ARIEZ L. L. MORALES
 ELECTRICAL ENGINEER

CHECKED & REVIEWED BY

MARK HARRY G. PASTOR, ABE
 MARK HARRY G. PASTOR, ABE
 ELECTRICAL ENGINEER

RECOMMENDING APPROVAL

DEANIS I. TACTAG, ABE
 DEANIS I. TACTAG, ABE
 ELECTRICAL ENGINEER

APPROVED

JOSE B. ESCOBAL, ABE
 JOSE B. ESCOBAL, ABE
 ELECTRICAL ENGINEER

SHEET NO.

E-1

LOAD SCHEDULE & COMPUTATION

Circuit No.	DESCRIPTION	QTY.	WATTS / OUTLET	TOTAL VA	VOLTAGE	AMPERE	CIRCUIT BREAKER	SIZE OF WIRE	CONDUIT
1	LIGHTING OUTLET	4	100	400	230 V	1.74	15 AT	3-3.5 mm THW2	20 mmØ
2	CONVEIENCE OUTLET	3	180	540	230 V	2.35	20 AT	3-3.5 mm THW2	20 mmØ
3	SPARE	1	1000	1000	230 V	4.35	20 AT	3-3.5 mm THW2	20 mmØ
4	SPARE	1	1000	1000	230 V	4.35	20 AT	3-3.5 mm THW	20 mmØ
TOTAL				2540 VA		12.79 AMP			

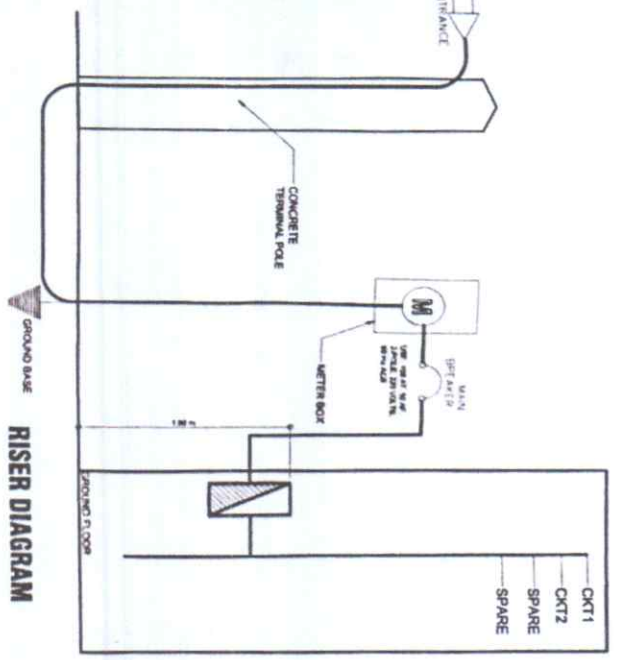
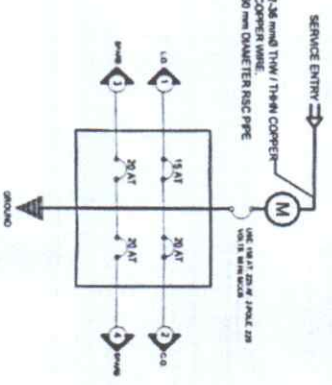
USE OF FEEDER CONDUCTOR AND PROTECTION:
 CONDUCTION
 TOTAL = (12.79) 31 + (0.25)(10)
 = 12.79 AMPERES

SIZE OF FEEDER PROTECTION:
 USE 2-30mm² THW COPPER WIRE + 1-14mm² TW GROUND WIRE
 IN 40mm Ø RSC TYPE
 ONE 150x11 - 11-250AF-230V/MCCA

LEGEND:

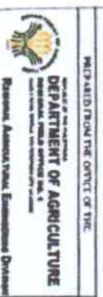
SYMBOL	DESCRIPTION	SYMBOL	DESCRIPTION
X	10W LED BULB	○	CONVEIENCE OUTLET
⊕	100W LED HIGH BAY	□	PANEL BOX
⊖	POWER CIRCUIT	⊕	CIRCUIT HOME/RUN
⊖	ROOMMATT HOUR METER	⊕	POWER SERVICE ENTRANCE CAP
⊖	5 GANG SWITCH	⊕	CIRCUIT BREAKER

CIRCUIT DIAGRAM



GENERAL ELECTRICAL NOTES

- 1 ALL ELECTRICAL WORKS INDICATED HEREIN SHALL BE DONE IN ACCORDANCE WITH THE LATEST PROVISIONS OF THE LATEST EDITION OF THE PHILIPPINE ELECTRICAL CODE, RULES AND REGULATIONS IN SUBSTITUTION AS REQUIREMENTS OF THE LOCAL POWER COMPANY AND REFERRED TO AS MANDATED IN SAID PARAGRAPH.
- 2 SERVICE FROM THE ELECTRIC POWER COMPANY SHALL BE 1 PHASE, 3-WIRE, 230 VOLTS, 60 CYCLES.
- 3 MINIMUM SIZE OF CONDUCTORS WHEN NOT INDICATED IN THE PLAN OR DRAWINGS SHALL BE 15mm Ø NOMINAL DIAMETER.
- 4 MINIMUM SIZE OF CONDUCTORS WHEN NOT INDICATED IN THE PLAN OR DRAWINGS SHALL BE 3.5 mm Ø NOMINAL DIAMETER.
- 5 WHENEVER NECESSARY PANEL BOX SHALL BE PROVIDED EVEN IF NOT INDICATED IN THE PLANS.
- 6 ELBOWS TO BE USED IN CONDUIT SHALL BE LONG SWEEP.
- 7 TURNABLE SWITCHES ARE TO BE INSTALLED WITH WIRE SIZE OF 20 mm² THW.
- 8 ALL ACES AND WATER PUMP SHALL BE PROVIDED WITH 20 AMPERES SAFETY SWITCH TO SERVE AS DISCONNECTING MEANS IN READILY ACCESS TO LOCATION WITHIN SIGHT FROM THE EQUIPMENT.
- 9 ALL INSTALLATION SHALL BE DONE IN GOOD AND NEAT WORKMANSHIP.
- 10 REFER TO TABLE SO F THE PHILIPPINE ELECTRICAL CODE FOR MINIMUM CONDUIT SIZES WHEN SUCH ARE NOT INDICATED ON THE PLANS.
- 11 CONSULT THE ARCHITECT OR THE PROFESSIONAL ELECTRICAL ENGINEER OR MASTER ELECTRICIAN FOR FURTHER VERIFICATION.
- 12



DEPARTMENT OF AGRICULTURE
 BUREAU OF AGRICULTURAL EXTENSION SERVICES
 Regional Agricultural Extension Division

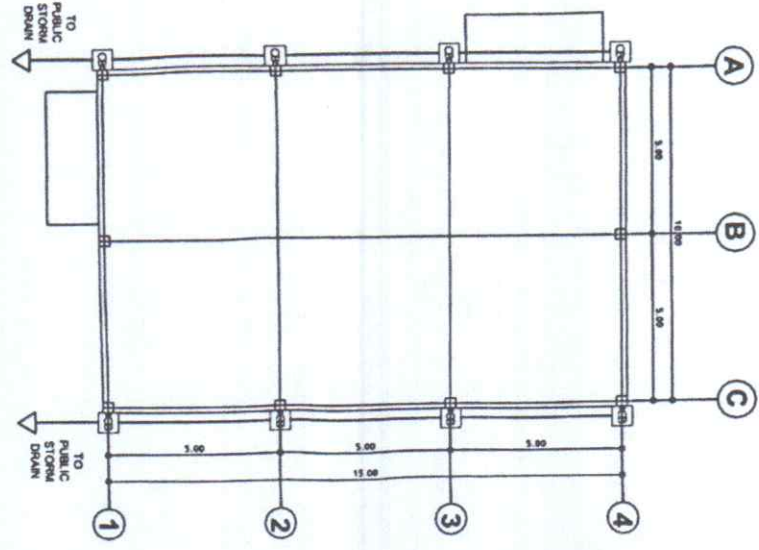
CONSTRUCTION OF FEED MILL
 PROCESSING FACILITY

MARK HARRY PASTOR, ABE
 (SEAL)

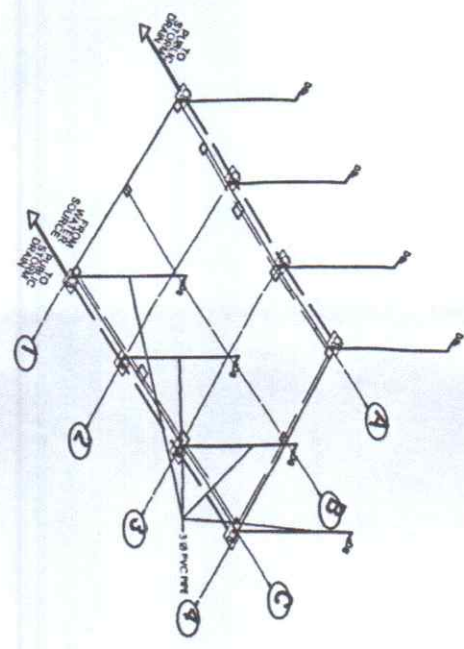
JOHN I. TACTAC, ABE
 (SEAL)

JOSE R. RASQUAN, ABE
 (SEAL)

E-2

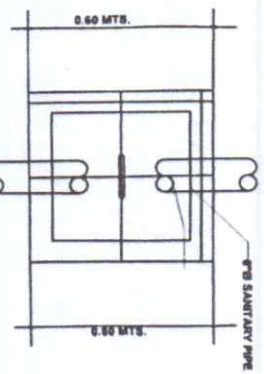
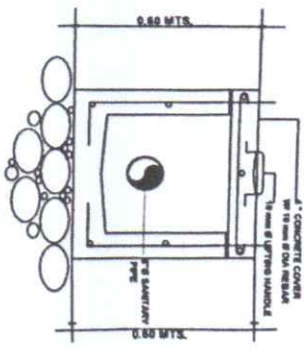


STORM DRAIN PLAN
SCALE 1:150 MTS



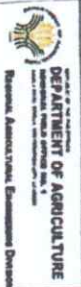
LEGENDS AND SYMBOLS:

CB	CATCH BASIN	OV Δ	GATE VALVE
FD	FLOOR DRAIN	CV Z	CHECK VALVE
DS	DOWN SPOUT	KS	KITCHEN SINK
CO	CLEAN OUT	LAV.	LAVATORY
φ	METER	WC	WATER CLOSET



CATCH BASIN DETAIL

PREPARED FROM THE OFFICE OF THE PROJECT TITLE PREPARED BY CHECKED & APPROVED BY REVIEWING APPROVED BY APPROVED BY SHEET NO.



CONSTRUCTION OF FEED MILL PROCESSING FACILITY

AR. JERICK BELD, L. MORALES

MARK HARRY D. PASTOR, ABE

DENNIS I. TACTAC, ABE

JERRY R. PASCUAL, DVM

P-1

BILL OF QUANTITIES

PROJECT NAME:

PROVISION OF LABOR, MATERIALS, EQUIPMENT RENTAL, AND OTHER INCIDENTALS NEEDED FOR THE CONSTRUCTION OF FEEDMILL FACILITY

PROJECT LOCATION:

BRGY # 40 BUYON, BACARRA, ILOCOS NORTE

PROJECT DESCRIPTION:

Construction of Feed Processing Facility with a dimension of 15mx10m

ITEM NO.	DESCRIPTION	UNIT	QUANTITY	UNIT PRICE	AMOUNT
I.	MOBILIZATION AND DEMOBILIZATION	1.00	l.s.		
II.	PERMITS AND CLEARANCE	1.00	l.s		
III.	PROJECT BILLBOARD/SIGN BOARD	1.00	l.s		
IV.	SAFETY AND HEALTH	1.00	l.s		
V.	CONSTRUCTION OF TEMPORARY FACILITY	12.00	sq.m.		
VI.	CLEARING AND GRUBBING	100.00	sq.m.		
VII.	EARTHWORKS	99.66	cu.m.		
VIII.	RSB WORKS	2,429.48	kgs		
IX.	FORMS WORKS	420.00	bd.ft.		
X.	CONCRETE WORKS	30.00	cu.m.		
XI.	MASONRY WORKS	30.00	sq.m.		
XII.	IRON WORKS	7,619.13	kgs		
XIII.	PAINTING WORKS	100.00	sq.m.		
XIV.	ROOFING AND SIDING WORKS	448.44	l.m		
XV.	WINDOWS AND DOORS	29.50	sq.m.		
XVI.	PLUMBING WORKS	1.00	lot		
XVII.	ELECTRICAL WORKS	15.00	outlet		
XVIII.	DA LOGO	1.00	lot		
				Grand Total:	

NUMBER OF DAYS TO COMPLETE THE PROJECT: 120 calendar days for Infrastructure component and 40 calendar days for the machinery component upon the completion of Infra component

TOTAL AMOUNT OF BID (in words and figures):

Name in Print Company/Office/Firm

Full Name of Bidder/Authorize Representative

Address: _____

By:

Signature Over Printed Name

DEPARTMENT OF AGRICULTURE-REGIONAL FIELD OFFICE 1
NAME OF PROCURING ENTITY

PROJECT REFERENCE NO.: _____
 NAME OF PROJECT: _____

**STATEMENT OF ALL ON-GOING GOVERNMENT AND PRIVATE CONTRACTS, INCLUDING CONTRACTS AWARDED BUT NOT YET
 STARTED, IF ANY, WHETHER SIMILAR OR NOT SIMILAR IN NATURE AND COMPLEXITY TO THE CONTRACT TO BE BID**

CONTRACT TO BE BID: _____
BUSINESS NAME: _____
BUSINESS ADDRESS: _____

Name of Contract/ Location Project Cost	a. Owner's Name b. Address c. Telephone Nos.	NATURE OF WORK	CONTRACTOR'S ROLE		a. Date Awarded b. Date Started c. Date Completion	% Accomplishment		Value of Outstanding Works
			Description	%		Planned	Actual	

Note: This statement shall be supported with:
 1. Notice of Award and/or Contract
 2. Notice to Proceed issued by the Owner

Submitted by:

Name of Representative of Bidder
Position
 Date: _____

Statement identifying the Bidder's Single Largest Completed Contract (SLCC) similar in nature

Contract to be Bid: _____
 Business Name: _____
 Business Address: _____

Name of Client	a. Owner's Name b. Address c. Telephone Nos.	Title of the Project in the Contract	Nature of Work	a. Date Awarded b. Contract Effectivity c. Date Completed	Contractor's Role (whether sole contractor, subcontractor, or partner in a JV)		a. Total Contract Value at Award b. Total Contract Value at Completion c. Contract Duration
					Description	%	
<u>Government</u>							
<u>Private</u>							

Note: This statement shall be supported with:

1. Notice of Award
2. Notice to Proceed
3. Contract
4. Owner's Certificate of Acceptance OR Constructors Performance Evaluation Summary (CPES) Rating

Submitted by : _____
 (Printed Name and Signature)
 Designation : _____
 Date : _____

Bid Securing Declaration Form

[shall be submitted with the Bid if bidder opts to provide this form of bid security]

REPUBLIC OF THE PHILIPPINES)
CITY OF _____) S.S.

BID SECURING DECLARATION **Project Identification No.: *[Insert number]***

To: **DEPARTMENT OF AGRICULTURE REGIONAL FIELD OFFICE 1**
City of San Fernando, La Union

I/We, the undersigned, declare that:

1. I/We understand that, according to your conditions, bids must be supported by a Bid Security, which may be in the form of a Bid Securing Declaration.
2. I/We accept that: (a) I/we will be automatically disqualified from bidding for any procurement contract with any procuring entity for a period of two (2) years upon receipt of your Blacklisting Order; and, (b) I/we will pay the applicable fine provided under Section 6 of the Guidelines on the Use of Bid Securing Declaration, within fifteen (15) days from receipt of the written demand by the procuring entity for the commission of acts resulting to the enforcement of the bid securing declaration under Sections 23.1(b), 34.2, 40.1 and 69.1, except 69.1(f), of the IRR of RA No. 9184; without prejudice to other legal action the government may undertake.
3. I/We understand that this Bid Securing Declaration shall cease to be valid on the following circumstances:
 - a. Upon expiration of the bid validity period, or any extension thereof pursuant to your request;
 - b. I am/we are declared ineligible or post-disqualified upon receipt of your notice to such effect, and (i) I/we failed to timely file a request for reconsideration or (ii) I/we filed a waiver to avail of said right; and
 - c. I am/we are declared the bidder with the Lowest Calculated Responsive Bid, and I/we have furnished the performance security and signed the Contract.

IN WITNESS WHEREOF, I/We have hereunto set my/our hand/s this ____ day of *[month]* *[year]* at *[place of execution]*.

*[Insert NAME OF BIDDER OR ITS AUTHORIZED
REPRESENTATIVE*

[Insert signatory's legal capacity]

Affiant

[Jurat]

[Format shall be based on the latest Rules on Notarial Practice]

DEPARTMENT OF AGRICULTURE-REGIONAL FIELD OFFICE 1

NAME OF PROCURING ENTITY _____

Standard Form Number: SF-INFR-48
 Revised on: August 11, 2004

Contract Reference No.: _____

Name of the Contract: _____

Location of the Contract: _____

(LIST) Qualification of Key Personnel Proposed to be Assigned to the Contract

Business Name: _____

Business Address: _____

		Project Manager/Engineer	Materials Engineer	Foreman	Construction Safety and Health Personnel	Other positions deemed required by the Applicant for the project
1	Name					
2	Address					
3	Date of Birth					
4	Employed since					
5	Experience					
6	Previous Employment					
7	Education					
8	PRC Licence					

Minimum Requirements : Project Manager/Engineer
 : Materials Engineer
 : Foreman
 : Foreman

Note : Attached individual resume and PRC License of the (professional) personnel

Submitted by : _____
 (Printed Name and Signature)

Designation : _____

Date : _____

One of the requirements from the bidder to be included in its Technical Envelope is a list of contractor's key personnel (viz, Project Manager, Project Engineers, Materials Engineers and Foremen), to be assigned to the contract to be bid, with their complete qualification and experience data (including the key personnel signed written commitment to work for the project once awarded the contract).

DEPARTMENT OF AGRICULTURE-REGIONAL FIELD OFFICE 1
NAME OF PROCURING ENTITY

Contract Reference Number
Name of the Contract
Location of the Contract

1. Name : _____
2. Name and Address of Owner : _____
3. Name and Address of the Owner's Engineer (Consultant) : _____
- 3-4. Indicate the Features of Project (particulars of the project Components and any other particular Interest connected with the project): _____
5. Contract Amount Expressed in Philippine currency : _____
6. Position : _____
7. Structures for which the employee was responsible : _____
8. Assignment Period : from _____ (months)
: to _____ (months)

Name and Signature of Employee

It is hereby certified that the above personnel can be assigned to this project, if the contract is awarded to our company.

(Place and Date)

(The Authorized Representative)

One of the requirements from the bidder to be included in its Technical Envelope is a list of contractor's key personnel (viz, Project Manager, Project Engineers, Materials Engineers and Foremen), to be assigned to the contract to be bid, with their complete qualification and experience data (including the key personnel signed written commitment to work for the project once awarded the contract). _____ **SF-INFR-47b**

Standard Form Number: SF-INFR-47
Revised on: August 11, 2004

KEY PERSONNEL
(FORMAT OF BIO-DATA)

Give the detailed information of the following personnel who are to be assigned as full-time field staff for the project. Fill up a form for each person.

- Authorized Managing Officer/Representative
- Sustained Technical Employee

1. Name : _____
2. Date of Birth : _____
3. Nationality : _____
4. Education and Degrees : _____
5. Specialty : _____
6. Registration : _____
7. Length of service with the Firm : _____
8. Years of Experience : _____

9. If item 7 is less than ten (10) years, give name and length of service with previous employers for a ten (10)-year period (attach additional sheet/s), if necessary:

<u>Name and Address of employer</u>	<u>Length of Service</u>
_____	_____ year(s) from _____ to _____
_____	_____ year(s) from _____ to _____
_____	_____ year(s) from _____ to _____

10. Experience:

This should cover the past ten (10) years of experience. (Attach as many pages as necessary to show involvement of personnel in projects using the format below).

One of the requirements from the bidder to be included in its Technical Envelope is a list of contractor's key personnel (viz, Project Manager, Project Engineers, Materials Engineers and Foremen), to be assigned to the contract to be bid, with their complete qualification and experience data (including the key personnel signed written commitment to work for the project once awarded the contract). _____ SF-INFR-47a

DEPARTMENT OF AGRICULTURE-REGIONAL FIELD OFFICE 1
NAME OF PROCURING ENTITY

Contract Reference Number
Name of the Contract
Location of the Contract

Standard Form Number: SF-INFR-46
Revised on: August 11, 2004

Key Personnel's Certificate of Employment

Issuance Date

DIR. NESTOR

Position of the Head of the Procuring Entity

DEPARTMENT OF AGRICULTURE REGIONAL FIELD OFFICE 1

CITY OF SAN FERNANDO, LA UNIONO

Dear Sir/Madame:

I am (Name of Nominee) a Licensed _____ Engineer with Professional License No. _____ issued on (Date of Issuance) at (place of issuance) .

I hereby certify that (Name of Bidder) has engaged my services as (designation) for (name of the Contract), if awarded to it.

As (designation), I supervised the following completed projects similar to the contract under bidding:

NAME OF PROJECT	OWNER	COST	DATE COMPLETED
_____	_____	_____	_____
_____	_____	_____	_____
_____	_____	_____	_____
_____	_____	_____	_____

At present, I am supervising the following projects:

NAME OF PROJECT	OWNER	COST	DATE COMPLETED
_____	_____	_____	_____
_____	_____	_____	_____
_____	_____	_____	_____
_____	_____	_____	_____

In case of my separation for any reason whatsoever from the above-mentioned contractor, I shall notify the (Name of the Procuring Entity) at least twenty one (21) days before the effective date of my separation.

As (Designation), I know I will have to stay in the job site all the time to supervise and manage the Contract works to the best of my ability, and aware that I am authorized to hanle only one (1) contract at a time.

I do not allow the use of my name for the purpose of enabling the above-mentioned Contractor to qualify for the Contract without any firm commitment on my part to assume the post of (Designation) thereof, if the contract is awarded to him since I understand that to do so will be

a sufficient ground for my disqualification as (Designation) in any future (Name of the Procuring Entity) bidding or employment with any Contractor doing business with the Name of the Procuring Entity .

(Signature of Engineer)

DRY SEAL

Republic of the Philippines)
_____) S.S.

SUBSCRIBED AND SWORN TO before me this _____ day of _____ 2022 affiant exhibiting to me his/her Residence Certificate No. _____ issued on _____ at _____.

Notary Public
Until December 31, 20_____

Doc. No. _____
Page No. _____
Book No. _____
Series of _____

One of the requirements from the bidder to be included in its Technical Envelope is a list of contractor's key personnel (viz, Project Manager, Project Engineers, Materials Engineers and Foremen), to be assigned to the contract to be bid, with their complete qualification and experience data (including the key personnel signed written commitment to work for the project once awarded the contract). _____ SF-INFR-46a

Standard Form Number: SF-INFR-49

Revised on August 11, 2004

LIST OF EQUIPMENT, OWNED OF LEASED and/or under PURCHASE AGREEMENT, PLEDGED TO THE PROPOSED PROJECT

Business Name : _____

Business Address : _____

Description	Model/Year	Capacity/ Performance/ Size	Plate No.	Motor No./ Body No.	Location	Condition	Proof of Ownership/ Lessor or Vendor

List of minimum equipment required for the project

Submitted by : _____

(Print name and affix signature)

Designation : _____

Date : _____

Omnibus Sworn Statement (Revised)

[shall be submitted with the Bid]

REPUBLIC OF THE PHILIPPINES)
CITY/MUNICIPALITY OF _____) S.S.

AFFIDAVIT

I, [Name of Affiant], of legal age, [Civil Status], [Nationality], and residing at [Address of Affiant], after having been duly sworn in accordance with law, do hereby depose and state that:

1. *[Select one, delete the other:]*

[If a sole proprietorship:] I am the sole proprietor or authorized representative of [Name of Bidder] with office address at [address of Bidder];

[If a partnership, corporation, cooperative, or joint venture:] I am the duly authorized and designated representative of [Name of Bidder] with office address at [address of Bidder];

2. *[Select one, delete the other:]*

[If a sole proprietorship:] As the owner and sole proprietor, or authorized representative of [Name of Bidder], I have full power and authority to do, execute and perform any and all acts necessary to participate, submit the bid, and to sign and execute the ensuing contract for [Name of the Project] of the [Name of the Procuring Entity], as shown in the attached duly notarized Special Power of Attorney;

[If a partnership, corporation, cooperative, or joint venture:] I am granted full power and authority to do, execute and perform any and all acts necessary to participate, submit the bid, and to sign and execute the ensuing contract for [Name of the Project] of the [Name of the Procuring Entity], as shown in the attached [state title of attached document showing proof of authorization (e.g., duly notarized Secretary's Certificate, Board/Partnership Resolution, or Special Power of Attorney, whichever is applicable)];

3. [Name of Bidder] is not "blacklisted" or barred from bidding by the Government of the Philippines or any of its agencies, offices, corporations, or Local Government Units, foreign government/foreign or international financing institution whose blacklisting rules have been recognized by the Government Procurement Policy Board, **by itself or by relation, membership, association, affiliation, or controlling interest with another blacklisted person or entity as defined and provided for in the Uniform Guidelines on Blacklisting;**

4. Each of the documents submitted in satisfaction of the bidding requirements is an authentic copy of the original, complete, and all statements and information provided therein are true and correct;

5. [Name of Bidder] is authorizing the Head of the Procuring Entity or its duly authorized representative(s) to verify all the documents submitted;

6. *[Select one, delete the rest:]*

[If a sole proprietorship:] The owner or sole proprietor is not related to the Head of the Procuring Entity, members of the Bids and Awards Committee (BAC), the

Technical Working Group, and the BAC Secretariat, the head of the Project Management Office or the end-user unit, and the project consultants by consanguinity or affinity up to the third civil degree;

[If a partnership or cooperative] None of the officers and members of [Name of Bidder] is related to the Head of the Procuring Entity, members of the Bids and Awards Committee (BAC), the Technical Working Group, and the BAC Secretariat, the head of the Project Management Office or the end-user unit, and the project consultants by consanguinity or affinity up to the third civil degree;

7. *[Name of Bidder]* complies with existing labor laws and standards; and
8. *[Name of Bidder]* is aware of and has undertaken the responsibilities as a Bidder in compliance with the Philippine Bidding Documents, which includes:
 - a. Carefully examining all of the Bidding Documents;
 - b. Acknowledging all conditions, local or otherwise, affecting the implementation of the Contract;
 - c. Making an estimate of the facilities available and needed for the contract to be bid, if any; and
 - d. Inquiring or securing Supplemental/Bid Bulletin(s) issued for the *[Name of the Project]*.
9. *[Name of Bidder]* did not give or pay directly or indirectly, any commission, amount, fee, or any form of consideration, pecuniary or otherwise, to any person or official, personnel or representative of the government in relation to any procurement project or activity.
10. **In case advance payment was made or given, failure to perform or deliver any of the obligations and undertakings in the contract shall be sufficient grounds to constitute criminal liability for Swindling (Estafa) or the commission of fraud with unfaithfulness or abuse of confidence through misappropriating or converting any payment received by a person or entity under an obligation involving the duty to deliver certain goods or services, to the prejudice of the public and the government of the Philippines pursuant to Article 315 of Act No. 3815 s. 1930, as amended, or the Revised Penal Code.**

IN WITNESS WHEREOF, I have hereunto set my hand this ___ day of ___, 20__ at _____, Philippines.

[Insert NAME OF BIDDER OR ITS AUTHORIZED REPRESENTATIVE]

[Insert signatory's legal capacity]

Affiant

[Jurat]

[Format shall be based on the latest Rules on Notarial Practice]

COMPUTATION OF NET FINANCIAL CONTRACTING CAPACITY (NFCC)

Summary of the Applicant Supplier’s/Distributor’s assets and liabilities on the basis of the attached Income Tax Return and Audited Financial Statement, stamped “RECEIVED” by the Bureau of Internal Revenue or BIR authorized collecting agent for the immediately preceding year.

		Year 20__
1	Total Assets	
2	Current Assets	
3	Total Liabilities	
4	Current Liabilities	
5	Net Worth (1-3)	
6	Net Working Capital (2-4)	

The Net Financial Contracting Capacity (NFCC), which must be at least equal to the ABC to be bid, based on the above data is calculated as follows:

NFCC = [(Current asset minus current liabilities) (15)] minus the value of all outstanding or uncompleted portions of the projects under ongoing contracts, including awarded contracts yet to be started

Or,

If the prospective bidder opts to submit a Committed Line of Credit (CLC), it must be at least equal to ten percent (10%) of the ABC to be bid and shall be confirmed or authenticated by a local universal or commercial bank.

Name of Bank _____ Amount _____

Herewith attached are certified true copies of the Income Tax Return and Audited Financial Statement Stamped “RECEIVED” by the BIR authorized collecting agent for the immediately preceding year.

Submitted by:

Name of Supplier/Distributor/Manufacturer

Printed Name and Signature of Authorized Representative

Date:

Bid Form for the Procurement of Infrastructure Projects

[shall be submitted with the Bid]

BID FORM

Date: _____

Project Identification No.: _____

To: **DEPARTMENT OF AGRICULTURE REGIONAL FIELD OFFICE 1**
City of San Fernando, La Union

Having examined the Philippine Bidding Documents (PBDs) including the Supplemental or Bid Bulletin Numbers [insert numbers], the receipt of which is hereby duly acknowledged, we, the undersigned, declare that:

- a. We have no reservation to the PBDs, including the Supplemental or Bid Bulletins, for the Procurement Project: *[insert name of contract]*;
- b. We offer to execute the Works for this Contract in accordance with the PBDs;
- c. The total price of our Bid in words and figures, excluding any discounts offered below is: *[insert information]*;
- d. The discounts offered and the methodology for their application are: *[insert information]*;
- e. The total bid price includes the cost of all taxes, such as, but not limited to: *[specify the applicable taxes, e.g. (i) value added tax (VAT), (ii) income tax, (iii) local taxes, and (iv) other fiscal levies and duties]*, which are itemized herein and reflected in the detailed estimates,
- f. Our Bid shall be valid within the period stated in the PBDs, and it shall remain binding upon us at any time before the expiration of that period;
- g. If our Bid is accepted, we commit to obtain a Performance Security in the amount of *[insert percentage amount]* percent of the Contract Price for the due performance of the Contract, or a Performance Securing Declaration in lieu of the allowable forms of Performance Security, subject to the terms and conditions of issued GPPB guidelines¹² for this purpose;
- h. We are not participating, as Bidders, in more than one Bid in this bidding process, other than alternative offers in accordance with the Bidding Documents;
- i. We understand that this Bid, together with your written acceptance thereof included in your notification of award, shall constitute a binding contract between us, until a formal Contract is prepared and executed; and
- j. We understand that you are not bound to accept the Lowest Calculated Bid or any other Bid that you may receive.

- k. We likewise certify/confirm that the undersigned, is the duly authorized representative of the bidder, and granted full power and authority to do, execute and perform any and all acts necessary to participate, submit the bid, and to sign and execute the ensuing contract for the *[Name of Project]* of the *[Name of the Procuring Entity]*.

- l. We acknowledge that failure to sign each and every page of this Bid Form, including the Bill of Quantities, shall be a ground for the rejection of our bid.

Name: _____

Legal capacity: _____

Signature: _____

Duly authorized to sign the Bid for and behalf of: _____

Date: _____